

SCREW PUNCHERS, PLATE PUNCHERS

First class

- 100% Made in Germany
- All tools made of particularly robust special steel for a long working life



Well planned

- Special cutting geometry for light first cut and speedy punching
- Less force required due to tapered, relieved blades
- Die with crosshairs for improved positioning



Innovative

- Round punchers split scrap pieces into three parts
- Shaped punches have lateral ejectors for the scrap part



Practical

- For manual and hydraulic use
- All tools and accessory parts can be ordered individually - no packaged units
- All punching tools are 100% compatible with the systems of other manufacturers
- Special punches can be produced at short notice if dimensions are given



Screw puncher DIAMANT

Innovative splitting punch with three cutting tips: punched waste is split into three parts.
Suitable for: steel sheets (ST 37), plastic and aluminium. Operation: manual and hydraulic
Design: with punch, die, tension bolt with ball bearing (encapsulated)



Nominal size PG	Nominal size, metric	Hole ø mm	Bolt size mm	Pre-drill ø mm	Max. material thickness mm	PU	Article no.
	12	12.5	6.0 x 40.0	6.5	1.5	1	13 2500
	16	16.2	9.5 x 50.0	10.0	2.0	1	13 2502
13	20	20.4	9.5 x 50.0	10.0	2.0	1	13 2504
	25	25.4	9.5 x 50.0	10.0	2.0	1	13 2506
	32	32.5	19.0 x 55.0	20.4*	3.0	1	13 2508
	40	40.5	19.0 x 75.0	20.4*	3.0	1	13 2510
	50	50.5	19.0 x 75.0	20.4*	3.0	1	13 2512
	63	63.5	19.0 x 75.0	20.4*	3.0	1	13 2514

* 1. Pre-drill: ø 10.0 mm 2. Pre-punch: ø 20.4 mm

Nominal size PG	Nominal size, metric	Hole ø mm	Bolt size mm	Pre-drill ø mm	Max. material thickness mm	PU	Article no.
9		15.2	9.5 x 50.0	10.0	2.0	1	13 2518
11		18.6	9.5 x 50.0	10.0	2.0	1	13 2520
13	20	20.4	9.5 x 50.0	10.0	2.0	1	13 2504
16		22.5	9.5 x 50.0	10.0	2.0	1	13 2524
21		28.3	9.5 x 50.0	10.0	2.0	1	13 2526
29		37.0	19.0 x 55.0	20.4*	3.0	1	13 2528
36		47.0	19.0 x 75.0	20.4*	3.0	1	13 2530
42		54.0	19.0 x 75.0	20.4*	3.0	1	13 2532
48		60.0	19.0 x 75.0	20.4*	3.0	1	13 2534

* 1. Pre-drill: ø 10.0 mm 2. Pre-punch: ø 20.4 mm

Nominal size inch	Hole ø mm	Bolt size mm	Pre-drill ø mm	Max. material thickness mm	PU	Article no.
1-7/32"	30.5	9.5 x 50.0	10.0	2.0	1	13 2536

Screw puncher accessories DIAMANT

for bolt size 6.0 mm x 40 mm	Size mm	PU	Article no.
Tension bolt with ball bearing	6.0 x 40	1	13 5010
Hydraulic bolt, complete	19.0 / 6.0	1	13 5012
Punch (with 6.0 mm thread)	12.5	1	13 2542
Die (for 6.0 mm bolt)	12.5	1	13 2544

for bolt size 9.5 mm x 50 mm	Size mm	PU	Article no.
Tension bolt with ball bearing	9.5 x 50	1	13 5000
Hydraulic bolt	19.0 / 9.5	1	13 5002
Punch (with 9.5 mm thread)	15.2	1	13 2550
	16.2	1	13 2552
	18.6	1	13 2554
	20.4	1	13 2556
	22.5	1	13 2558
	25.4	1	13 2560
	28.3	1	13 2562
	30.5	1	13 2564
Die (for 9.5 mm bolt)	15.2	1	13 2566
	16.2	1	13 2568
	18.6	1	13 2570
	20.4	1	13 2572
	22.5	1	13 2574
	25.4	1	13 2576
	28.3	1	13 2578
	30.5	1	13 2580



Screw puncher accessories DIAMANT

for bolt size 19 mm x 55 mm

Size mm

	Size mm		
Tension bolt with ball bearing	19.0 x 55.0	1	13 5004
Hydraulic bolt	19.0 x 120.0	1	13 5006
Punch (with 19 mm thread)	32.5	1	13 2586
	37.0	1	13 2588
Die (for 19 mm bolt)	32.5	1	13 2590
	37.0	1	13 2592

for bolt size 19 mm x 75 mm

Size mm

	Size mm		
Tension bolt with ball bearing	19.0 x 75	1	13 5008
Hydraulic bolt	19.0 x 120	1	13 5006
Punch (with 19 mm thread)	40.5	1	13 2598
	47.0	1	13 2600
	50.5	1	13 2602
	54.0	1	13 2604
	60.0	1	13 2606
	63.5	1	13 2608
Die (for 19 mm bolt)	40.5	1	13 2610
	47.0	1	13 2612
	50.5	1	13 2614
	54.0	1	13 2616
	60.0	1	13 2618
	63.5	1	13 2620



Screw puncher DIAMANT - VA

Innovative splitting punch with three cutting tips: punched waste is split into three parts.

Suitable for: stainless steel (VA steel), steel sheets (ST 37), plastic and aluminium. Operation: manual and hydraulic (we recommend the use of a hydraulic unit.) Design: with splitting punch, die, without tension bolt

Nominal size	Nominal size	Hole-ø	Bolt	Pre-drill ø	max. Material		
PG	metric	mm	Size mm	mm	thickness mm		
	16	16.2	11.1 x 60.0	11.5	2.5	1	13 2700
13	20	20.4	11.1 x 60.0	11.5	2.5	1	13 2702
	25	25.4	11.1 x 60.0	11.5	2.5	1	13 2704
	32	32.5	19.0 x 55.0	20.4*	3.5	1	13 2706
	40	40.5	19.0 x 75.0	20.4*	3.5	1	13 2708
	50	50.5	19.0 x 75.0	20.4*	3.5	1	13 2710
	63	63.5	19.0 x 75.0	20.4*	3.5	1	13 2712

* 1. Pre-drill: ø 11.5 mm 2. Pre-punch: ø 20.4 mm

Nominal size	Nominal size	Hole-ø	Bolt	Pre-drill ø	max. Material		
PG	metric	mm	Size mm	mm	thickness mm		
9		15.2	11.1 x 60.0	11.5	2.5	1	13 2714
11		18.6	11.1 x 60.0	11.5	2.5	1	13 2716
13	20	20.4	11.1 x 60.0	11.5	2.5	1	13 2702
16		22.5	11.1 x 60.0	11.5	2.5	1	13 2720
21		28.3	19.0 x 55.0	20.4*	3.5	1	13 2722
29		37.0	19.0 x 55.0	20.4*	3.5	1	13 2724
36		47.0	19.0 x 75.0	20.4*	3.5	1	13 2726
42		54.0	19.0 x 75.0	20.4*	3.5	1	13 2728
48		60.0	19.0 x 75.0	20.4*	3.5	1	13 2730

* 1. Pre-drill: ø 11.5 mm 2. Pre-punch: ø 20.4 mm

Nominal size	Hole-ø	Screw	Pre-drill ø	max. Material		
Inch	mm	Size mm	mm	thickness mm		
1-7 / 32"	30.5	19 x 55	20.4*	3.5	1	13 2732

* 1. Pre-drill: ø 11.5 mm 2. Pre-punch: ø 20.4 mm





Screw puncher accessories DIAMANT - VA

for bolt size 11.1 mm x 60 mm

Size mm

	Size mm	PU	Article no.
Tension bolt with ball bearing	11.1 x 60.0	1	13 5014
Hydraulic bolt, complete	19.0 / 11.1	1	13 5016
Punch (with 11.1 mm thread)	15.2	1	13 2734
	16.2	1	13 2736
	18.6	1	13 2738
	20.4	1	13 2740
	22.5	1	13 2742
	25.4	1	13 2744
Die (for 11.1 mm bolt)	15.2	1	13 2746
	16.2	1	13 2748
	18.6	1	13 2750
	20.4	1	13 2752
	22.5	1	13 2754
	25.4	1	13 2756

for bolt size 19 mm x 55 mm

Size mm

	Size mm	PU	Article no.
Tension bolt with ball bearing	19.0 x 55.0	1	13 5004
Hydraulic bolt	19.0 x 120.0	1	13 5006
Punch (with 19 mm thread)	28.3	1	13 2758
	30.5	1	13 2760
	32.5	1	13 2762
	37.0	1	13 2764
	Die (for 19 mm bolt)	28.3	1
	30.5	1	13 2768
	32.5	1	13 2770
	37.0	1	13 2772

for bolt size 19 mm x 75 mm

Size mm

	Size mm	PU	Article no.
Tension bolt with ball bearing	19.0 x 75.0	1	13 5008
Hydraulic bolt	19.0 x 120.0	1	13 5006
Punch (with 19 mm thread)	40.5	1	13 2774
	47.0	1	13 2776
	50.5	1	13 2778
	54.0	1	13 2780
	60.0	1	13 2782
	63.5	1	13 2784
Die (for 19 mm bolt)	40.5	1	13 2786
	47.0	1	13 2788
	50.5	1	13 2790
	54.0	1	13 2792
	60.0	1	13 2794
	63.5	1	13 2796

Round screw puncher BASIC

Suitable for: steel sheets (ST 37), plastic and aluminium. Operation: manual and hydraulic

Design: includes punch, die and tension bolt with ball bearing (encapsulated)

Nominal size PG	Nominal size metric	Hole-ø mm	Bolt Size mm	Pre-drill ø mm	max. Material thickness mm	PU	Article no.
16	16	16.2	9.5 x 50.0	10.0	2.0	1	13 2300
13	20	20.4	9.5 x 50.0	11.0	2.0	1	13 2302
	25	25.4	9.5 x 50.0	11.0	2.0	1	13 2304
	32	32.5	9.5 x 50.0	11.0	2.0	1	13 2306
	40	40.5	19.0 x 55.0	20.4*	3.0	1	13 2308
	50	50.5	19.0 x 75.0	20.4*	3.0	1	13 2310
	63	63.5	19.0 x 75.0	20.4*	3.0	1	13 2312

* 1. Pre-drill: ø 10.0 mm 2. Pre-punch: ø 20.4 mm





Round screw puncher BASIC

Nominal size PG	Nominal size metric	Hole- \varnothing mm	Bolt Size mm	Pre-drill \varnothing mm	max. Material thickness mm		
9		15.2	9.5 x 50.0	10.0	2.0	1	13 2318
11		18.6	9.5 x 50.0	11.0	2.0	1	13 2320
13	20	20.4	9.5 x 50.0	11.0	2.0	1	13 2302
16		22.5	9.5 x 50.0	11.0	2.0	1	13 2324
21		28.3	9.5 x 50.0	11.0	2.0	1	13 2326
29		37.0	19.0 x 55.0	20.4*	3.0	1	13 2328
36		47.0	19.0 x 75.0	20.4*	3.0	1	13 2330
42		54.0	19.0 x 75.0	20.4*	3.0	1	13 2332
48		60.0	19.0 x 75.0	20.4*	3.0	1	13 2334

* 1. Pre-drill: \varnothing 10.0 mm 2. Pre-punch: \varnothing 20.4 mm



Nominal size Inch	Hole- \varnothing mm	Screw Size mm	Pre-drill \varnothing mm	max. Material thickness mm		
1-7 / 32"	30.5	9.5 x 50.0	10.0	2.0	1	13 2336
	68.0	19.0 x 75.0	20.4*	3.0	1	13 2338
2-3 / 4"	70.0	19.0 x 75.0	20.4*	3.0	1	13 2340
3"	76.2	19.0 x 75.0	20.4*	3.0	1	13 2342
3-1 / 8"	80.0	19.0 x 75.0	20.4*	3.0	1	13 2344
	82.0	19.0 x 75.0	20.4*	3.0	1	13 2346

* 1. Pre-drill: \varnothing 10.0 mm 2. Pre-punch: \varnothing 20.4 mm

Screw puncher accessories BASIC

for bolt size 9.5 mm x 50 mm	Size mm		
Tension bolt with ball bearing	9.5 x 50.0	1	13 5000
Hydraulic bolt	19.0 / 9.5	1	13 5002
Punch (with 9.5 mm thread)	15.2	1	13 2354
	16.2	1	13 2356
	18.6	1	13 2358
	20.4	1	13 2360
	22.5	1	13 2362
	25.4	1	13 2364
	28.3	1	13 2366
	30.5	1	13 2368
	32.5	1	13 2370
Die (for 9.5 mm bolt)	15.2	1	13 2374
	16.2	1	13 2376
	18.6	1	13 2378
	20.4	1	13 2380
	22.5	1	13 2382
	25.4	1	13 2384
	28.3	1	13 2386
	30.5	1	13 2388
	32.5	1	13 2390



for bolt size 19 mm x 55 mm	Size mm		
Tension bolt with ball bearing	19.0 x 55.0	1	13 5004
Hydraulic bolt	19.0 x 120.0	1	13 5006
Punch (with 19 mm thread)	37.0	1	13 2396
	40.5	1	13 2398
Die (for 19 mm bolt)	37.0	1	13 2400
	40.5	1	13 2402



Screw punch accessories BASIC

for bolt size 19 mm x 75 mm

Size mm

Design	Size/mm	PU	Article no.
Tension bolt with ball bearing	19.0 x 75.0	1	13 5008
Hydraulic bolt	19.0 x 120.0	1	13 5006
Punch (with 19 mm thread)	47.0	1	13 2408
	50.5	1	13 2410
	54.0	1	13 2412
	60.0	1	13 2414
	63.5	1	13 2416
	68.0	1	13 2418
	70.0	1	13 2420
	76.2	1	13 2424
	80.0	1	13 2426
	82.0	1	13 2428
	Die (for 19 mm bolt)	47.0	1
50.5		1	13 2432
54.0		1	13 2434
60.0		1	13 2436
63.5		1	13 2438
68.0		1	13 2440
70.0		1	13 2442
76.2		1	13 2446
80.0		1	13 2448
82.0		1	13 2450



Screw punch DIAMANT sets

Options with five or seven different sizes.

Suitable for: steel sheets (ST 37), plastic and aluminium. Operation: manual and hydraulic

Design: consists of splitting punches and dies. Storage: in practical, robust plastic case

Design	Nominal size metric mm	Max. material thickness mm	PU	Article no.
5 pieces	16	2.0	1	13 3000
	20	2.0		
	25	2.0		
	32	2.0		
	40	3.0		
7 pieces	16	2.0	1	13 3002
	20	2.0		
	25	2.0		
	32	2.0		
	40	3.0		
	50	3.0		
	63	3.0		
11 pieces	12	1.5	1	13 3008
	16	2.0		
	20	2.0		
	25	2.0		
	32	2.0		
	40	3.0		
13 pieces	16	2.0	1	13 3010
	20	2.0		
	25	2.0		
	32	2.0		
	40	3.0		
	63	3.0		

Additional equipment: tension bolt with ball bearing (encapsulated), pre-drill and assembly paste

Design

Nominal size

Max. material thickness mm

metric mm

12

1.5

16

2.0

20

2.0

25

2.0

32

2.0

40

3.0

11 pieces

1

13 3008

16

2.0

20

2.0

25

2.0

32

2.0

40

3.0

50

3.0

63

3.0

13 pieces

1

13 3010

Design

Size/mm

PU Article no.

Advice and ordering: Phone: +49 (0)2191 3718-01, Fax: +49 (0)2191 3718-85, E-mail: order@cimco.de

151



Screw puncher DIAMANT sets

12 pieces screw puncher sets including hand-held punch and accessories. Options: with straight hand-held punch or 90° angled hand-held punch.

Suitable for: steel sheets (ST 37), plastic and aluminium. Operation: hydraulic

Design: consists of five splitting punches and dies per set; hydraulic bolts (2 items), pre-drill and spacer sleeve set (3 pieces). Storage: in practical, robust plastic case

Contains straight hydraulic hand-held punch

Design	Nominal size metric mm	Max. material thickness mm
	16	2.0
	20	2.0
	25	2.0
	32	2.0
	40	3.0

12 pieces 1 13 3012



Contains 90° angled hand-held punch, can be rotated 360°

Design	Nominal size metric mm	Max. material thickness mm
	16	2.0
	20	2.0
	25	2.0
	32	2.0
	40	3.0

12 pieces 1 13 3014



12 pieces screw puncher set accessories

Individual parts	Size mm		
Hydraulic bolt, complete	19.0 / 9.5	1	13 5002
Hydraulic bolt	19.0 x 120.0	1	13 5006
Spacer sleeve set (3 pieces)		1	13 5072
Pre-drill	10.0	1	13 4026



Screw puncher DIAMANT - VA sets

Screw puncher sets consisting of splitting punches and dies: options for five or seven different sizes.

Suitable for: stainless steel (VA steel), steel sheets (ST 37), plastic and aluminium. Operation: manual and hydraulic (We recommend the use of a hydraulic unit.)

Design: consists of splitting punches and dies.

Storage: in practical, robust plastic case

Design	Nominal size metric mm	Max. material thickness mm
	16	2.5
	20	2.5
	25	2.5
	32	3.5
	40	3.5

5 pieces 1 13 3004

	16	2.5
	20	2.5
	25	2.5
	32	3.5
	40	3.5
	50	3.5
	63	3.5

7 pieces 1 13 3006





Screw puncher DIAMANT - VA sets

12 pieces screw puncher sets including hand-held punch and accessories. Options: with straight hand-held punch or 90° angled hand-held punch.

Suitable for: stainless steel (VA steel), steel sheets (ST 37), plastic and aluminium. Operation: hydraulic

Design: consists of five splitting punches and dies per set; hydraulic bolts (2 items), pre-drill and spacer sleeve set (3 pieces). Storage: in practical, robust plastic case

Contains straight hydraulic hand-held punch

Design	Nominal size metric mm	Max. material thickness mm
	16	2.5
	20	2.5
	25	2.5
	32	3.5
	40	3.5

12 pieces 1 13 3016



Contains 90° angled hand-held punch, can be rotated 360°

Design	Nominal size metric mm	Max. material thickness mm
	16	2.5
	20	2.5
	25	2.5
	32	3.5
	40	3.5

12 pieces 1 13 3018



12 pieces screw puncher set accessories

Individual parts	Size mm		
Hydraulic bolt, complete	19.0 / 11.1	1	13 5016
Hydraulic bolt	19.0 x 120.0	1	13 5006
Spacer sleeve set (3 pieces)		1	13 5072
Pre-drill	11.5	1	13 4030



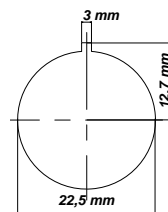
Round and groove screw puncher

Patented die: with lateral scrap part ejector. Hole punching with 3 mm stud: for anti-rotation locking of pushbuttons and switches. Suitable for:

steel sheet (ST 37), plastic and aluminium. Operation: manual and hydraulic

Design: with punch, die, tension bolt with ball bearing (encapsulated), counter nut and adapter for hydraulic operation. Storage: in a practical, robust plastic case

Nominal size ø	Pre-drill ø mm	Max. material thickness mm		
22.5 mm with 3 mm stud	14.0	2.0	1	13 2800



Round and groove screw puncher accessories

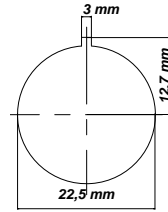
Individual parts	Size mm		
Tension bolt with ball bearing		1	13 5018
Counter nut		1	13 5020
Screw-down nut		1	13 5022
Adapter for hydraulics		1	13 5024
Punch	22.5 - 3.2 - 25.4	1	13 2802
Die	22.5 - 3.2 - 25.4	1	13 2804





Round and groove screw puncher VA

With lateral ejector for the scrap part, supplied in a plastic case, also suitable for hydraulic operation, stainless steel sheets (VA) and steel sheets (ST 37). Hole punch design complete with stud. For anti-rotation locking of pushbuttons and switches.



Nominal size ø	Pre-drill ø mm	Max. material thickness mm	PU	Article no.
22.5 mm with 3 mm stud	14.0	2.0	1	13 2801



Round and groove screw puncher VA accessories

Tension bolt with ball bearing	1	13 5018
Counter nut	1	13 5020
Screw-down nut	1	13 5022
Adapter for hydraulics	1	13 5024
Punch	22.5 - 3.2 - 25.4	1 13 2803
Die	22.5 - 3.2 - 25.4	1 13 2804

Rectangular screw puncher

Patented die: with lateral scrap part ejector.

Suitable for: steel sheets (ST 37), plastic and aluminium. Operation: manual and hydraulic

Design: with punch, die, tension bolt with ball bearing (encapsulated), counter nut and adapter for hydraulic operation.

Storage: in a practical, robust plastic case

Nominal size ø	Pre-drill ø mm	Max. material thickness mm	PU	Article no.
17.0 x 19.0	14.0	2.0	1	13 2806
21.8 x 25.8	17.0	2.0	1	13 2808
22.0 x 30.0	17.0	2.0	1	13 2810
22.0 x 42.0	17.0	2.0	1	13 2811
25.0 x 50.0	17.0	2.0	1	13 2812



Rectangular screw puncher accessories

Individual parts	Size mm	PU	Article no.
Tension bolt with ball bearing		1	13 5028
Counter nut		1	13 5020
Screw-down nut		1	13 5022
Adapter for hydraulics		1	13 5024
Punch	17.0 x 19.0	1	13 2818
Die	17.0 x 19.0	1	13 2828



Rectangular screw puncher accessories

Individual parts	Size mm	PU	Article no.
Tension bolt with ball bearing		1	13 5021
Counter nut		1	13 5020
Screw-down nut		1	13 5030
Adapter for hydraulics		1	13 5032
Punch	21.8 x 25.8	1	13 2820
Punch	22.0 x 30.0	1	13 2822
Punch	22.0 x 42.0	1	13 2824
Die	21.8 x 25.8	1	13 2830
Die	22.0 x 30.0	1	13 2832
Die	22.0 x 42.0	1	13 2834
Counter nut		1	13 5046
Punch	25.0 x 50.0	1	13 2826
Die	25.0 x 50.0	1	13 2836





Rectangular screw puncher

Patented die: with lateral scrap part ejector.

Suitable for: steel sheets (ST 37), plastic and aluminium. Operation: hydraulic

Design: with punch, die, hydraulic bolt and counter nut

Storage: in a practical, robust plastic case

Nominal size \varnothing	Pre-drill \varnothing mm	Max. material thickness mm	PU	Article no.
45.0 x 92.0	24.0	2.0	1	13 2813
46.0 x 92.0	24.0	2.0	1	13 2814
68.0 x 138.0	30.0*	3.0	1	13 2816

*Only in combination with CIMCO article no. 13 4022 or adapter 13 5088



Rectangular screw puncher accessories

Individual parts	Size mm	PU	Article no.
Hydraulic bolt		1	13 5034
Counter nut		1	13 5036
Punch	45.0 x 92.0	1	13 2837
Punch	46.0 x 92.0	1	13 2838
Die	45.0 x 92.0	1	13 2841
Die	46.0 x 92.0	1	13 2842
Hydraulic bolt		1	13 5038
Counter nut		1	13 5040
Punch	68.0 x 138.0	1	13 2840
Die	68.0 x 138.0	1	13 2844



Square screw puncher

Patented die: with lateral scrap part ejector.

Suitable for: steel sheets (ST 37), plastic and aluminium. Operation: manual and hydraulic

Design: with punch, die, tension bolt with ball bearing (encapsulated), counter nut and adapter for hydraulic operation.

Storage: in a practical, robust plastic case

Nominal size \varnothing	Pre-drill \varnothing mm	Max. material thickness mm	PU	Article no.
12.7 x 12.7	10.0	1.75	1	13 2846
15.8 x 15.8	10.0	1.75	1	13 2848
19.0 x 19.0	14.0	2.00	1	13 2850
22.2 x 22.2	14.0	2.00	1	13 2852
24.0 x 24.0	14.0	2.00	1	13 2854
25.4 x 25.4	17.0	2.00	1	13 2856



Square screw puncher accessories

Individual parts	Size mm	PU	Article no.
Tension bolt with ball bearing		1	13 5042
Counter nut		1	13 5044
Screw-down nut		1	13 5022
Adapter for hydraulics		1	13 5024
Punch	12.7 x 12.7	1	13 2872
Punch	15.8 x 15.8	1	13 2874
Die	12.7 x 12.7	1	13 2884
Die	15.8 x 15.8	1	13 2886
Tension bolt with ball bearing		1	13 5028
Counter nut		1	13 5020
Screw-down nut		1	13 5022
Adapter for hydraulics		1	13 5024
Punch	19.0 x 19.0	1	13 2876
Punch	22.2 x 22.2	1	13 2878
Punch	24.0 x 24.0	1	13 2880
Die	19.0 x 19.0	1	13 2888
Die	22.2 x 22.2	1	13 2890
Die	24.0 x 24.0	1	13 2892





Square screw puncher accessories

Tension bolt with ball bearing		1	13 5021
Counter nut		1	13 5020
Screw-down nut		1	13 5030
Adapter for hydraulics		1	13 5032
Punch	25.4 x 25.4	1	13 2882
Die	25.4 x 25.4	1	13 2894



Square screw puncher

Patented die: with lateral scrap part ejector.

Suitable for: steel sheets (ST 37), plastic and aluminium. Operation: hydraulic. Design: with punch, die, hydraulic bolt and counter nut. Storage: in a practical, robust plastic case

Nominal size \varnothing	Pre-drill \varnothing mm	Max. material thickness mm	PU	Article no.
45.5 x 45.5	20.0	3.0	1	13 2858
46.0 x 46.0	20.0	3.0	1	13 2860
50.8 x 50.8	24.0	3.0	1	13 2862
68.0 x 68.0	24.0	3.0	1	13 2864
92.0 x 92.0	30.0*	3.0	1	13 2866
125.0 x 125.0	30.0*	3.0	1	13 2868
138.0 x 138.0	30.0*	3.0	1	13 2870

*Only in combination with CIMCO article no. 13 4022 or adapter 13 5088



Square screw puncher accessories

Individual parts	Size mm	PU	Article no.
Hydraulic bolt		1	13 5048
Counter nut		1	13 5050
Punch	45.5 x 45.5	1	13 2896
Punch	46.0 x 46.0	1	13 2898
Die	45.5 x 45.5	1	13 2910
Die	46.0 x 46.0	1	13 2912
Hydraulic bolt		1	13 5034
Counter nut		1	13 5050
Punch	50.8 x 50.8	1	13 2900
Die	50.8 x 50.8	1	13 2914
Hydraulic bolt		1	13 5034
Counter nut		1	13 5036
Punch	68.0 x 68.0	1	13 2902
Die	68.0 x 68.0	1	13 2916
Hydraulic bolt		1	13 5038
Counter nut		1	13 5036
Punch	92.0 x 92.0	1	13 2904
Die	92.0 x 92.0	1	13 2918
Hydraulic bolt		1	13 5038
Counter nut		1	13 5054
Punch	125.0 x 125.0	1	13 2906
Punch	138.0 x 138.0	1	13 2908
Die	125.0 x 125.0	1	13 2920
Die	138.0 x 138.0	1	13 2922





Square screw puncher - VA

Patented die: with lateral scrap part ejector.

Suitable for: stainless steel (VA steel) and steel sheets (ST 37). Operation: hydraulic. Design: with punch, die, hydraulic bolt and counter nut. Storage: in a practical, robust plastic case

Nominal size \varnothing	Pre-drill \varnothing mm	Max. material thickness mm	PU	Article no.
46.0 x 46.0	20.0	2.0	1	13 2861
68.0 x 68.0	24.0	2.0	1	13 2865
92.0 x 92.0	30.0*	2.0	1	13 2867

*Only in combination with CIMCO article no. 13 4022 or adapter 13 5088



Square screw puncher VA accessories

Individual parts	Size mm	PU	Article no.
Hydraulic bolt		1	13 5048
Counter nut		1	13 5050
Punch	46.0 x 46.0	1	13 2899
Die	46.0 x 46.0	1	13 2912
Hydraulic bolt		1	13 5034
Counter nut		1	13 5036
Punch	68.0 x 68.0	1	13 2903
Die	68.0 x 68.0	1	13 2916
Hydraulic bolt		1	13 5038
Counter nut		1	13 5036
Punch	92.0 x 92.0	1	13 2905
Die	92.0 x 92.0	1	13 2918



Screw puncher Sub-Min-D

Patented die: with lateral scrap part ejector. Suitable for: steel sheets (ST 37) and stainless steel (VA steel).

Operation: manual and hydraulic. Design: for multiple plug-in connectors, with punch, die, tension bolt, counter nut, screw-down nut with ball bearing (encapsulated) and adapter for hydraulic operation

Storage: in a practical, robust plastic case

Number of pins	Nominal size mm	Pre-drill \varnothing mm	Max. material thickness mm	PU	Article no.
9	20.0 x 11.9	10.0	2.00 / 1.50	1	13 2924
15	28.6 x 11.9	10.0	2.00 / 1.50	1	13 2926
25	42.0 x 11.9	10.0	1.75 / 1.25	1	13 2928
37	58.3 x 11.9	10.0	1.75 / 1.25	1	13 2930
50	55.9 x 14.7	10.0	1.65 / 1.00	1	13 2932



Screw punch Sub-Min-D accessories

Individual parts	Size mm	PU	Article no.
Tension bolt		1	13 5056
Counter nut		1	13 5058
Screw-down nut		1	13 5022
Adapter/hydraulics		1	13 5024
Punch	20.0 x 11.9	1	13 2934
Die	20.0 x 11.9	1	13 2944
Tension bolt		1	13 5056
Counter nut		1	13 5060
Screw-down nut		1	13 5022
Adapter/hydraulics		1	13 5024
Punch	28.6 x 11.9	1	13 2936
Die	28.6 x 11.9	1	13 2946
Tension bolt		1	13 5056
Counter nut		1	13 5062
Screw-down nut		1	13 5022
Adapter/hydraulics		1	13 5024
Punch	42.0 x 11.9	1	13 2938
Die	42.0 x 11.9	1	13 2948



Screw punch Sub-Min-D accessories

Individual parts	Size mm		
Tension bolt		1	13 5056
Counter nut		1	13 5064
Screw-down nut		1	13 5022
Adapter/hydraulics		1	13 5024
Punch	58.3 x 11.9	1	13 2940
Die	58.3 x 11.9	1	13 2950
Tension bolt		1	13 5056
Counter nut		1	13 5066
Screw-down nut		1	13 5022
Adapter/hydraulics		1	13 5024
Punch	55.9 x 14.7	1	13 2942
Die	55.9 x 14.7	1	13 2952



Special screw puncher for heavy-duty plug-in connectors

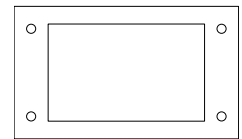
Patented die: with lateral scrap part ejector. Drilling position is marked out by the die using prick punches: prick punches can be exchanged using 2.5 mm hex keys or wound back. There is therefore no need to mark out the centre marking.

Suitable for: steel sheet (ST 37), plastic and aluminium.

Operation: hydraulic. Design: with punch, die, hydraulic bolt and counter nut.

Storage: in a practical, robust plastic case

Number of pins	Nominal size mm	Pre-drill ø mm	Max. material thickness mm		
6	52.0 x 36.0	24.0	2.0	1	13 2954
10	65.0 x 36.0	24.0	2.0	1	13 2956
16	86.0 x 36.0	24.0	2.0	1	13 2958
24	112.0 x 36.0	24.0	2.0	1	13 2960



Special screw puncher accessories

Individual parts	Size mm		
Hydraulic bolt		1	13 5034
Counter nut		1	13 5050
Punch	52.0 x 36.0	1	13 2962
Die	52.0 x 36.0	1	13 2970
Hydraulic bolt		1	13 5034
Counter nut		1	13 5050
Punch	65.0 x 36.0	1	13 2964
Die	65.0 x 36.0	1	13 2972
Hydraulic bolt		1	13 5034
Counter nut		1	13 5050
Punch	86.0 x 36.0	1	13 2966
Die	86.0 x 36.0	1	13 2974
Hydraulic bolt		1	13 5034
Counter nut		1	13 5070
Punch	112.0 x 36.0	1	13 2968
Die	112.0 x 36.0	1	13 2976



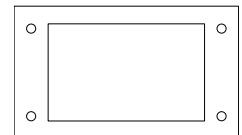
Special screw puncher VA for heavy-duty plug-in connectors

Patented die: with lateral scrap part ejector. Drilling position is marked out by the die using prick punches: prick punches can be exchanged using 2.5 mm hex keys or wound back. There is therefore no need to mark out the centre marking.

Suitable for: stainless steel (VA) and steel sheet (ST 37).

Operation: hydraulic. Design: with punch, die, hydraulic bolt and counter nut. Storage: in a practical, robust plastic case

Number of pins	Nominal size mm	Pre-drill ø mm	Max. material thickness mm		
					ST 37 / VA
6	52.0 x 36.0	24.0	2.0	1	13 2980
10	65.0 x 36.0	24.0	2.0	1	13 2982
16	86.0 x 36.0	24.0	2.0	1	13 2984
24	112.0 x 36.0	24.0	2.0	1	13 2986



Special screw puncher VA accessories

Design	Size mm	PU	Article no.
Hydraulic bolt		1	13 5034
Counter nut		1	13 5050
Punch	52.0 x 36.0	1	13 2990
Die	52.0 x 36.0	1	13 2970
Hydraulic bolt		1	13 5034
Counter nut		1	13 5070
Punch	65.0 x 36.0	1	13 2992
Die	65.0 x 36.0	1	13 2972
Hydraulic bolt		1	13 5034
Counter nut		1	13 5050
Punch	86.0 x 36.0	1	13 2994
Die	86.0 x 36.0	1	13 2974
Hydraulic bolt		1	13 5034
Counter nut		1	13 5070
Punch	112.0 x 36.0	1	13 2996
Die	112.0 x 36.0	1	13 2976



Hydraulic battery-operated punch

Practical hand-held hydraulic tool with high performance rechargeable 18 V battery, for round, rectangular and square punching in control cabinets and plant construction. With pressure relief valve, high-performance drive motor, high tensile strength aluminium head, weight including battery only 3.7 kg, ergonomically designed two-component handle, rechargeable battery packages can be inserted from either of two sides:



Battery insertion at the front to ensure stable position



Battery insertion at the back for space-saving operation



- Punching force: 70 kN with pressure relief valve
- Battery: charging time: 45 minutes after full discharge
- Charger: will charge all rechargeable 18 - 28 V batteries, compatible with NiCD, NiMH and Li-Ion batteries,
- Automatic temperature monitoring, charge condition on LED display
- Supplied in a robust plastic case: battery operated hand-held hydraulic unit, two 18 V rechargeable batteries, 18 - 28 V charger, two hydraulic bolts, spacer sleeve set (3 pieces), pre-drill 11.0 mm, operating instructions

Hydraulic battery-operated punch with accessories	1	13 4012
Rechargeable battery	1	13 4014

Hydraulic hand-held punches

Practical hand-held punch for round, rectangular and square punching in control cabinets and plant construction. Pressure relief valve provides safety function: pressure switched off automatically at 650 bar. Made of high tensile strength aluminium (saving approx. 40% in weight), ergonomic handle - springs back by itself, one-handed operation means easier positioning of the die in the crosshairs. Punching force: 75 kN, operating pressure max: 650 bar.

Hydraulic hand-held punch - straight design (1.6 kg)	1	13 4016
--	---	---------



Hydraulic hand-held punch - angled 90°, can be rotated 360° (1.9 kg)	1	13 4018
--	---	---------

1
2
3
4
5
6
7
8
9
10
11
12
13
14
15
16
17
18
19
20
21
22
23
24
25
26

Hydraulic punch with hand pump

Ideal in restricted spaces, for round, rectangular and square punching in control cabinets and plant construction.
 Punching force: 75 kN with pressure relief valve
 Operating pressure max: 650 bar
 Weight: 2.0 kg
 Supplied in a robust plastic case: hydraulic punch with hand pump, hydraulic cylinder, hydraulic 600 mm hose, two hydraulic bolts, spacer sleeve set (3 pieces), HSS pre-drill 11.0 mm



Hydraulic punch with hand pump

1

13 4020

Hydraulic punch with foot pump

Ideal in restricted spaces, for round, rectangular and square punching in control cabinets and plant construction.
 Keep both hands free for exact positioning and punching: splayed support stand ensures tip-proof operation
 Punching force: 75 kN with pressure relief valve
 Operating pressure max: 700 bar³
 Tank volume: 270 cm³
 Usable oil volume: 210 cm³
 Flow rate: 1.7 cm per piston stroke
 Supplied in a robust plastic case: foot pump, hydraulic cylinder with quick-fitting coupling, hydraulic hose 2.8 m, two hydraulic bolts, spacer sleeve set (5 pieces), pre-drill 11.0 mm



Hydraulic punch with foot pump

1

13 4022

Hydraulic cylinder

For all electric, foot and hand-operated pumps with quick-fitting coupling and a maximum output pressure of 700 bar.
 Compact construction, for punching round, rectangular and square holes as well as special shapes in stainless steel and steel sheet ST 37 (control cabinets and plant construction).
 Hydraulic cylinder with quick-fitting coupling (up to 115 kN), high tensile strength aluminium body, suitable for tension bolts with UNF thread, \varnothing 19.0 mm, drip-free coupling and uncoupling, easy operation, with dust protector cap, supplied in a plastic case.

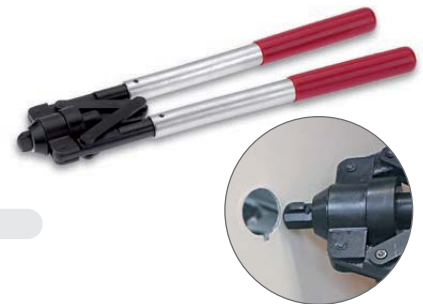
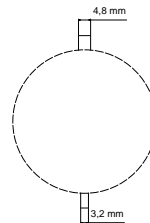


1

13 4023

Keyway pliers

Punch keyways quickly and easily in 2.0 mm steel sheets (ST 37), save time-consuming filing of grooves for anti-rotational locking, options for keyways in 3.2 mm and 4.8 mm size, exchangeable keyway punch, long operating life as punch and die are made of hardened tool steel, easy punching thanks to strong lever action, weight 1.3 kg



Keyway pliers

1

13 4000

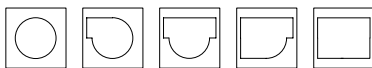
Replacement punches in 3.2 mm and 4.8 mm

1

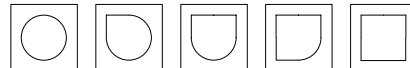
13 4002

Nibbler

Pre-punched round holes can easily and economically be converted to square or rectangular holes.
 Particularly recommended for producing unusual dimensions (special shapes).



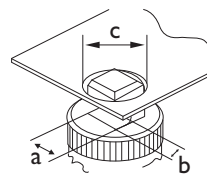
Round to rectangular



Round to square

Material thickness: max. 2.0 mm ST 37

Dimensions:	a	b	c	Pre-punch
ASN 15	15.0	6.5	21.5	21.5 mm \varnothing
ASN 20	20.0	9.0	28.5	28.5 mm \varnothing



Nibbler ASN15

1

13 4004

Nibbler ASN20

1

13 4006

Replacement punch ASN15

1

13 4008

Replacement punch ASN20

1

13 4010



Quick release nut

For shaped punch with thread shape UNF 19 mm, used as replacement for normal counter nut saving approx. 75% time in comparison to screw version. For quickly locking and unlocking on the thread, however screwing it on or off normally is ensured despite this even if it jams. The quick release nut is pushed onto the thread of the tension bolt and then when it touches the stamp, is latched onto Cover. Pushing the cover back releases this latching on again.

Quick release nut without tension bolt	1	13 5026
--	---	---------



Screw puncher centring ring

Made of plastic. Ideal aid for tension bolts or hydraulic bolts in screw puncher systems.

For use in oversized drill holes, for example in control cabinets to centre tension bolts (screw puncher).

The centring ring can be used with all known screw puncher designs that split the scrap part - including products from other manufacturers! Suitable for puncher systems that split into 2 or 3 pieces. The ring size 3 is suitable for 19 mm connecting bolts (UNF3/4-16) both in manual and also in hydraulic operation. The ring in size 3 can be used for a hole diameter of up to 28 mm in the sheet to be processed. The smallest hole diameter in which the ring will still link tool and workpiece is 20.4 mm.

	1	13 5080
--	---	---------



Individual parts for manual operation

Bolts for steel sheets ST 37

Tension bolt with ball bearing (encapsulated)	6.0 x 40.0	1	13 5010
Tension bolt with ball bearing (encapsulated)	9.5 x 50.0	1	13 5000

Bolts for stainless steel and steel sheets ST 37

Tension bolt with ball bearing (encapsulated)	19.0 x 55.0	1	13 5004
Tension bolt with ball bearing (encapsulated)	19.0 x 75.0	1	13 5008
Tension bolt with ball bearing	11.1 x 60.0	1	13 5014



Individual parts for hydraulic operation

Bolts for steel sheets ST 37

Hydraulic bolt, complete	19.0 / 9.5	1	13 5002
Hydraulic bolt 13 5002	9.5 x 75.0	1	13 5074
Adapter for hydraulic bolt 13 5002	19.0 x 38.0 (inside: 9.5)	1	13 5024
Hydraulic bolt	19.0 x 120.0	1	13 5006

Bolts for stainless steel

Hydraulic bolt, complete	19.0 / 11.1	1	13 5016
Hydraulic bolt 13 5016	11.1 x 75.0	1	13 5076
Adapter for hydraulic bolt 13 5016	19.0 x 38.0 (inside: 11.1)	1	13 5078
Hydraulic bolt	19.0 x 120.0	1	13 5006

Spacer sleeve set (3 pieces)	1	13 5072
Hydraulic oil	1 litre	13 4024



Spacer sleeve set

When using tension bolts size 30.0 mm and above,

A set contains: tension bolt A0, long, spacer, two countersunk screws hex socket M 6 x 30, two countersunk screws hex socket M 6 x 35

	1	13 5088
--	---	---------



General accessories

Pre-drill	10.0	1	13 4026
Pre-drill	11.0	1	13 4028
Pre-drill	11.5	1	13 4030
Step drill, holder shaft ø 10 mm	M12, M16, M20, M25, M32, M40	1	13 4032
Assembly paste	120 g	1	13 4034



Special step drill for screw punching

HSS step drill for burr-free drilling of through-holes for screw puncher tension bolts M 8 ($\frac{3}{8}$ ") – M 10 ($\frac{7}{16}$ ") – M 12 – M 16 – $\frac{3}{4}$ " – M 20 in material up to 4 mm thick. Suitable for use in hand and box column drills, total of 9 drill steps, holder shaft (\varnothing 10 mm) with 3 driver carriers prevents slipping in the chuck.

1 20 1212



Cable duct cutter

For cutting burr-free lengths without waste, for plastic conduits and covers, low force required for cutting, foldable, sprung blade protection, fastening lugs for workbench mounting, width of cutting blades up to 125 mm, laser engraved length stop up to 1000 mm

1 13 4036



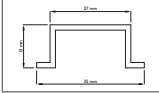
DIN profile cutter and punching tool

For cutting burr-free lengths without waste, for copper mounting rails, reduced force needed with reinforced eccentric, laser-engraved length stop up to 1000 mm, hand operation for length cutting and punching in lengthways and crossways mode

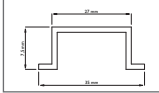
Profile equipment: TS 35x15 - TS 35x7.5 - TS 15x5.5 - E-Cu 10x3.0 - C 15x34 13 4038

Profile equipment: TS 35x15 - TS 35x7.5 - TS 15x5.5 - E-Cu 10x3.0 - G 15x32 13 4040

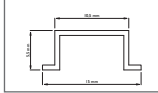
TS 35 x 15



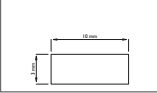
TS 35 x 7,5



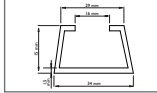
TS 15 x 5,5



E-Cu 10 x 3,0



C-Profil 15 x 34



G-Profil 15 x 32

