

## Quick Getting Started Guide

Revision Date: Sunday, 22 July 2012

Printer type used in example: Brother HL-2270DW (around NZD \$100)

### Installation

Install the printing software "Fleximark Soft Light Version 10.0" by running the setup.exe. Follow the onscreen instructions and it is recommended to use the default settings such as installation directory.

You can download your free copy from [http://download.fleximark.net/fl\\_registrera\\_int.asp?lang=eng](http://download.fleximark.net/fl_registrera_int.asp?lang=eng)

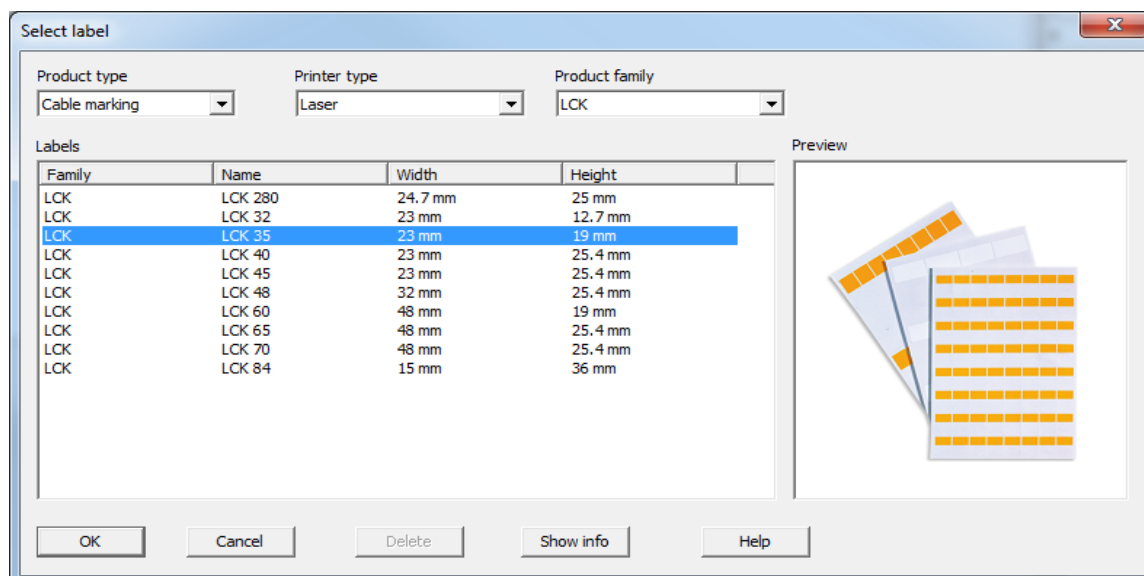
The software is compatible with Windows 2000, XP, Vista and Windows 7.

### Getting Started

The first thing to do is to select the label type. For this go to "Home->Select Label..."

The template pop up window should appear where you can select the model of label you are using. The easiest way to find the label you have is by using the three drops down boxes to narrow down your options.

For example Product type this will be either "Wire Marking" or "Cable Marking", Printer type this will be "Laser Printer" and Family will depend on the specific series of label. Below is an example of this menu.



**"FLEXIMARK**  
simple marking solutions..."



**LAPP KABEL**

**Engineering Computer Services Ltd**  
Cnr Te-Rapa & Ruffell Rd  
Hamilton, 3200  
New Zealand

## Appliance wire and Conductor Marking

Sales: 0800 849 2211  
Tel: 07 849 2211  
Fax: 07 849 2220

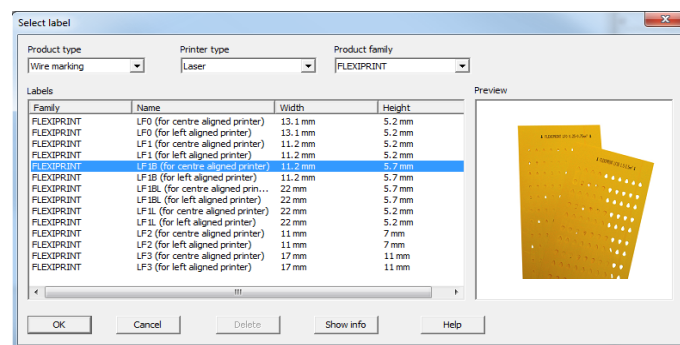
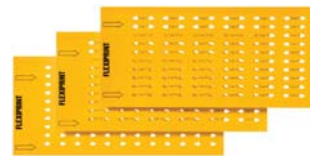
### Flexi-Print Labels

[www.lappgroup.co.nz](http://www.lappgroup.co.nz)

The Flexi-Print labels are quickest and most cost effective marking option for appliance wire and conductors from multi-core cables.

For the Flexi-Print use the below template settings

- Product Type = Wire Marking
- Printer Type = Laser
- Family = Flexiprint
- Label = LF1B (For Centre Aligned Printer)

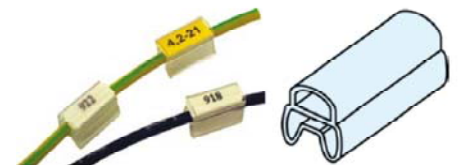
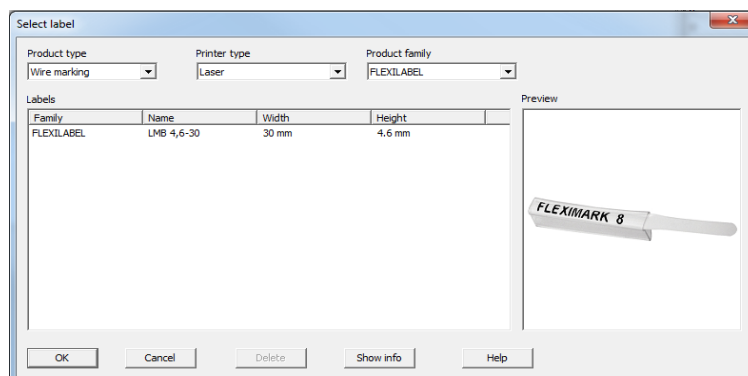


## PT Transparent Collar Labels

Transparent collars are one of the most common marking types in the industry. Fleximark have created an insert compatible with these collars.

For the transparent collar labels, use the below template settings

- Product Type = Wire Marking
- Printer Type = Laser
- Family = Flexilabel
- Label = LMB 4,6-35



**"FLEXIMARK**  
simple marking solutions..."



**LAPP KABEL**

**Engineering Computer Services Ltd**  
Cnr Te-Rapa & Ruffell Rd  
Hamilton, 3200  
New Zealand

Sales: 0800 849 2211  
Tel: 07 849 2211  
Fax: 07 849 2220

[www.lappgroup.co.nz](http://www.lappgroup.co.nz)

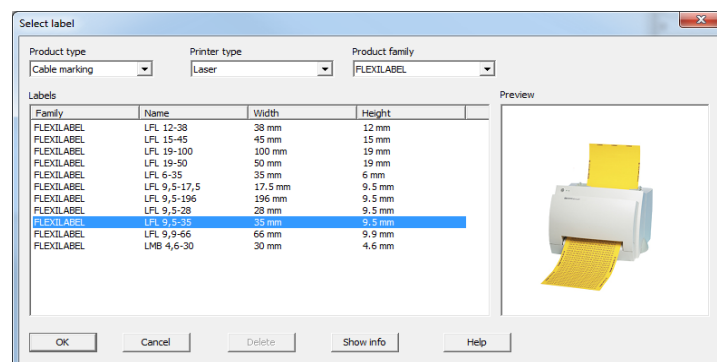
## Overall Cable Marking

### Clear Label Holders

Transparent label holders are a simple and robust marking option for cables.

For the labels used with the transparent holders, use the below template settings

- Product Type = Cable Marking
- Printer Type = Laser
- Family = Flexilabel
- Label = LFL 9,5-35 or LFL 9,5-70

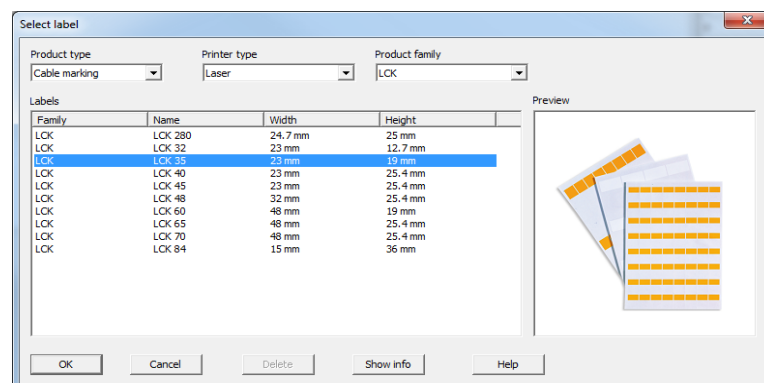


### LCK Wrap-Around Labels

LCK wrap around labels are the quickest and most cost effective overall cable marking option. Because the label is flush with the cable they are less likely to snag when dragging the cable.

For LCK wrap around labels, use the below template settings

- Product Type = Cable Marking
- Printer Type = Laser
- Family = LCK
- Label = LCK35, LCK40 or LCK 45



**"FLEXIMARK**  
*simple marking solutions..."*



**LAPPKABEL**

**Engineering Computer Services Ltd**  
Cnr Te-Rapa & Ruffell Rd  
Hamilton, 3200  
New Zealand

Sales: 0800 849 2211  
Tel: 07 849 2211  
Fax: 07 849 2220

## Looking at the software

Below is an example how you can layout the software.

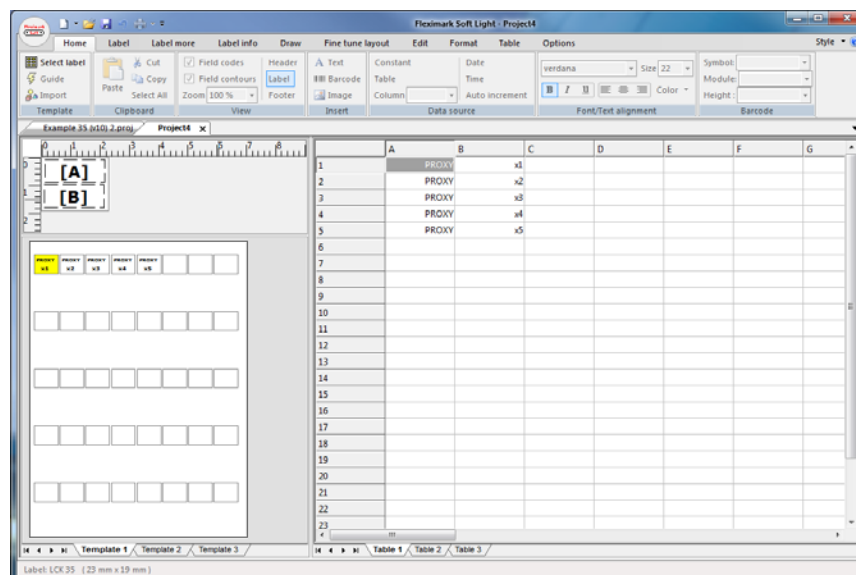
[www.lappgroup.co.nz](http://www.lappgroup.co.nz)

On the right hand side we have our table with our label data. On the top left we have our label template. On the bottom left we have a preview of how this will print. When we select the table cell data on the right you can see it highlights the cell on the preview window.

To add more rows in the table data just key in more data.

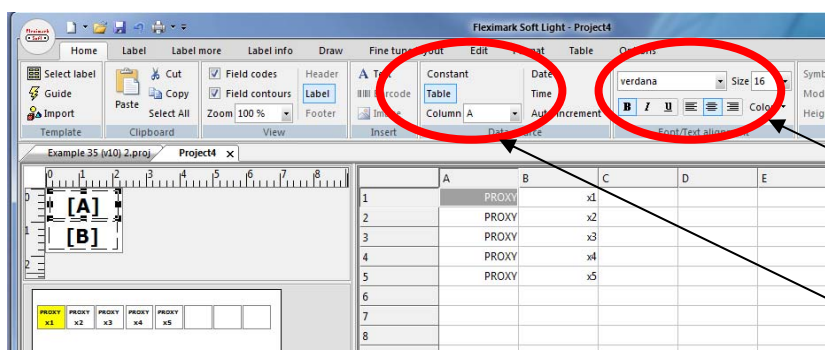
"[A]" in the template will print the data from column A in the table

"[B]" in the template will print the data from column B in the table



You can move and change the fonts of the template by selecting the [A] or [B], and then in the top menu you can change the font type and size.

You can also add more columns by copying and pasting in the template, then changing the source data column.



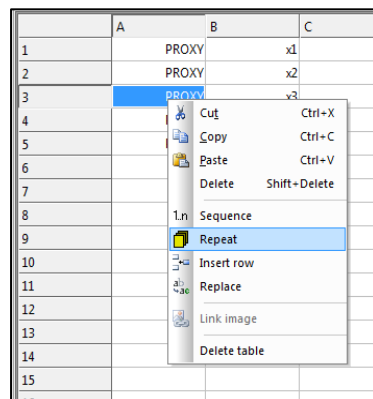
Changing the font

Changing the source data column

## Useful Automatic Numbering Feature

Labels in switchboards often contain large numbers of repeated numbers and text. There are two tools built into the fleximark software which allows you to automatically create sequences of numbers or text.

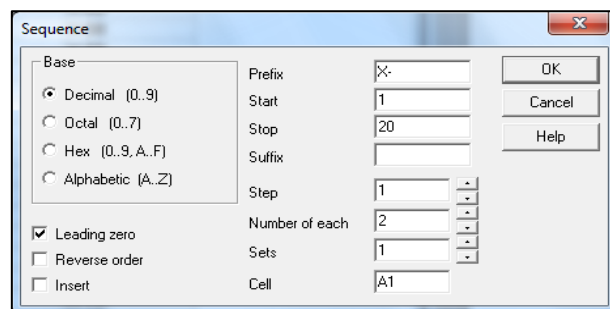
Right Click in the table and there are two built in options: Sequence and Repeat.



## Number Sequence

In the below example we have used a prefix of "X-" and then created the numbers from 1 to 20. To make the formatting line up we have added a leading zero (ie "0" becomes "01").

We have also set this up to create two sets of each number (ie "Number of each" is 2). This is useful if you have to label each end of the cable with duplicate numbers. This will make 40 labels in total.



	A	B
1	SAFETY	X-01
2	SAFETY	X-01
3	SAFETY	X-02
4	SAFETY	X-02
5	SAFETY	X-03
6	SAFETY	X-03
7	SAFETY	X-04
8	SAFETY	X-04
9	SAFETY	X-05
10	SAFETY	X-05
11	SAFETY	X-06
12	SAFETY	X-06
13	SAFETY	X-07
14	SAFETY	X-07
15	SAFETY	X-08
16	SAFETY	X-08
17	SAFETY	X-09
18	SAFETY	X-09
19	SAFETY	X-10
20	SAFETY	X-10
21	PROXY	X-11
22	PROXY	X-11
23	PROXY	X-12
24	PROXY	X-12
25	PROXY	X-13
26	PROXY	X-13
27	PROXY	X-14
28	PROXY	X-14
29	PROXY	X-15
30	PROXY	X-15
31	PROXY	X-16
32	PROXY	X-16
33	PROXY	X-17
34	PROXY	X-17
35	PROXY	X-18
36	PROXY	X-18
37	PROXY	X-19
38	PROXY	X-19
39	PROXY	X-20
40	PROXY	X-20

**"FLEXIMARK**  
*simple marking solutions..."*



**LAPP KABEL**

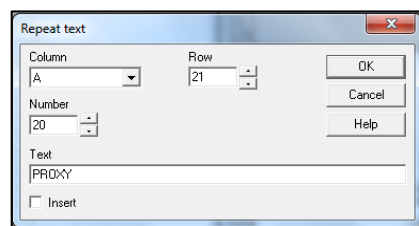
**Engineering Computer Services Ltd**  
Cnr Te-Rapa & Ruffell Rd  
Hamilton, 3200  
New Zealand

Sales: 0800 849 2211  
Tel: 07 849 2211  
Fax: 07 849 2220

[www.lappgroup.co.nz](http://www.lappgroup.co.nz)

## Repeat Text

For column A we have use the repeat text option (remember column A will be printed on the first row of each label). Repeat text is a useful way to duplicate large quantities of text.

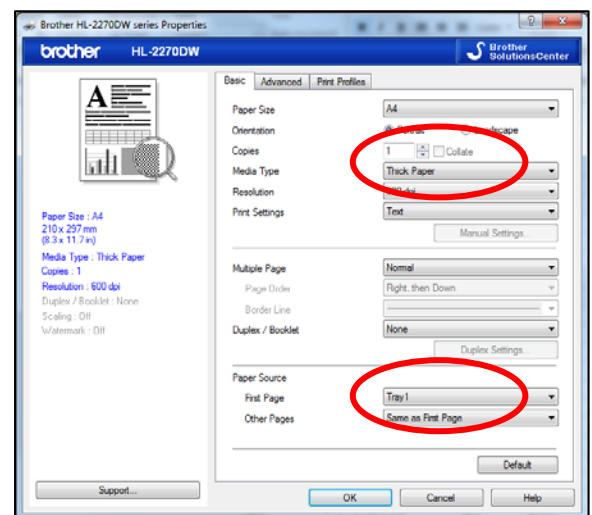


## Printing the Labels

When you are ready to start printing labels you can do this via the File->Print... menu.

Insert the Fleximark sheets into the printer tray. For smaller A5 sheets you will need to adjust the paper holders in the tray.

Some printers you are able to change the paper type. Fleximark labels are made from polyester which is plastic material quite different to plain A4 paper. Therefore it is recommended to change the paper type to "Thick Paper" or "OHP Plastic".



When you first try printing use plain printer paper rather than the actual Flexiprint labels, this will help you get the alignment correct. If the labels are A5 size then cut down the standard printer paper so they are the same size.

## Adjusting the margins

It is quite common for the margins to be slightly out the first time you try printing, every office printer is slightly different. Therefore you will need to make some slight changes to the margins in the software. Once you have them lined up, keep reusing the same project and you will always have the margins correct.

### Step 1 – Get the Top Left Label Correct

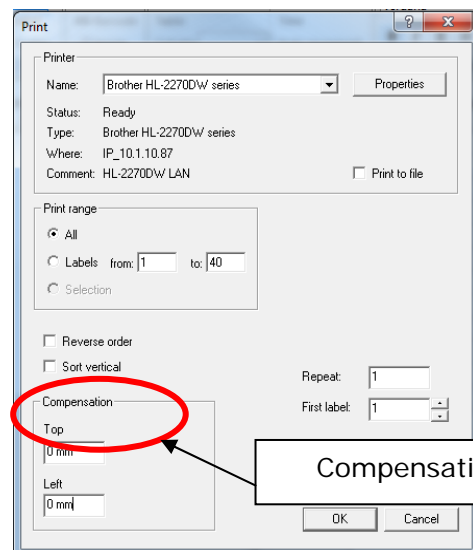
The first step is to get the first label (ie Top Left Label) in the correct position. Use the compensation option under the File->Print...

#### Top Margin

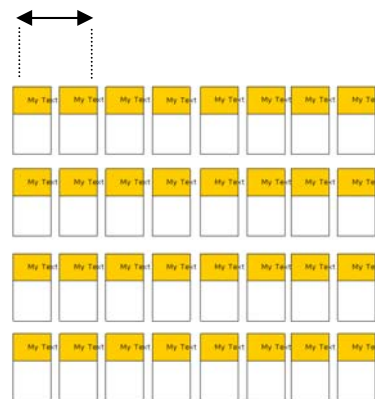
A positive value will move the text down  
A negative value will move the text up

#### Left Margin

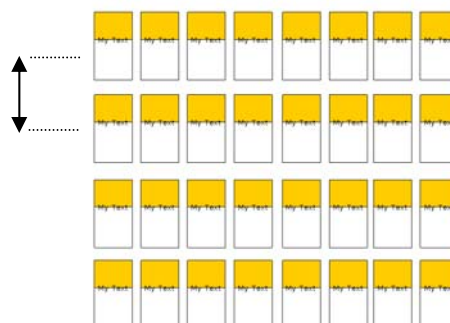
A positive value will move the text right  
A negative value will move the text left



The text in this image is off around 2mm to the right. Therefore we would set the Left Margin to -2mm



The text in this image is off around 2mm to the bottom. Therefore we would set the Top Margin to -2mm

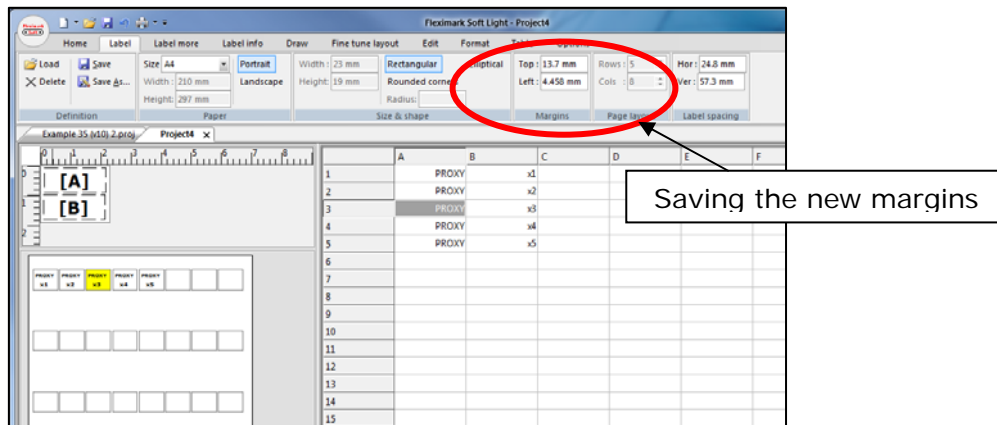




## Step 1 – Get the Top Left Label Correct (Cont.)

Once you have the first label in the correct position it is a good idea to save the values into your project. This is done under the "label->Margins" area of the menu. Adjust the figures in here by the compensation values you have some up with...

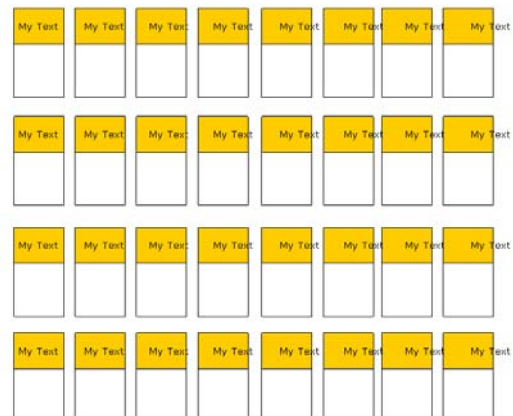
LCK35 Margins			
	Original Value	Compensation	New Values
Top	13.7 mm	-0.5 mm	13.2 mm
Left	4.458 mm	1.4 mm	5.585 mm



## Step 2 – Gradual Alignment

Once you get the first label in the middle you might still find there is a gradual problem across the page. As in this image you can see the left labels are good, but as you go across the page the labels get slightly out.

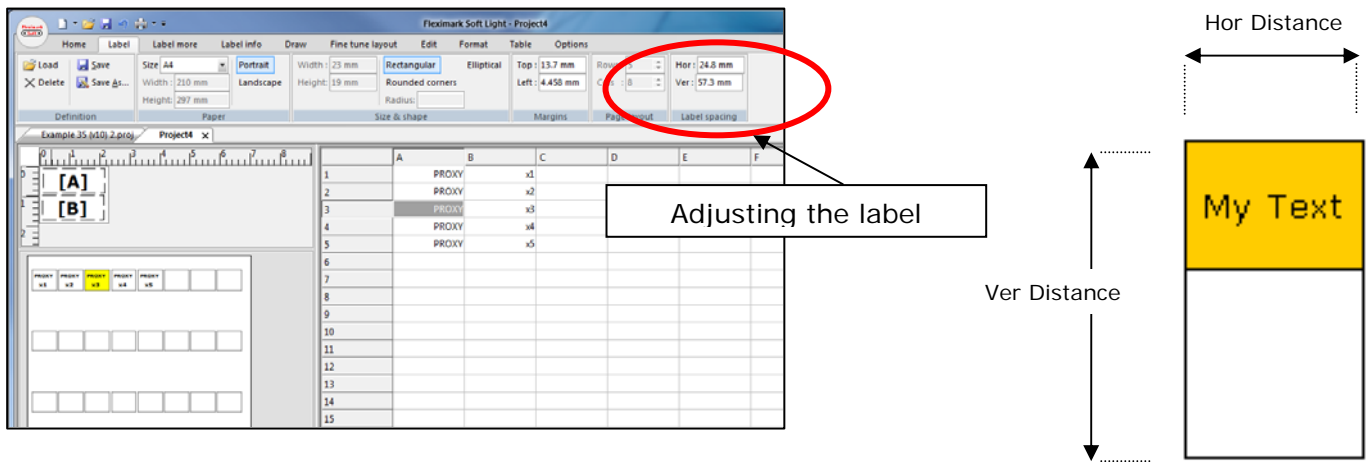
This requires us to slightly modify the actual label margins.





## Gradual Alignment – Cont.

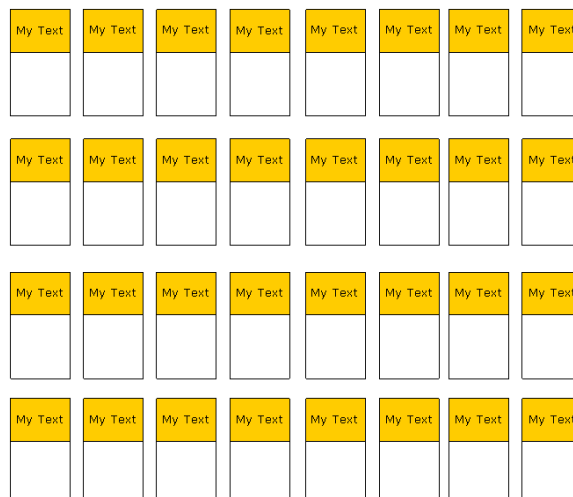
To change the label spacing use the following menu: "Label->Label Spacing...".  
(as shown in the below screen shot).



Once you have made note of the old values, change the left margin and top margin by what you feel these need to be moved by. Generally it is best to use small changes (0.5mm) at any time.

## Final Labels

When completed your labels should look as follows.

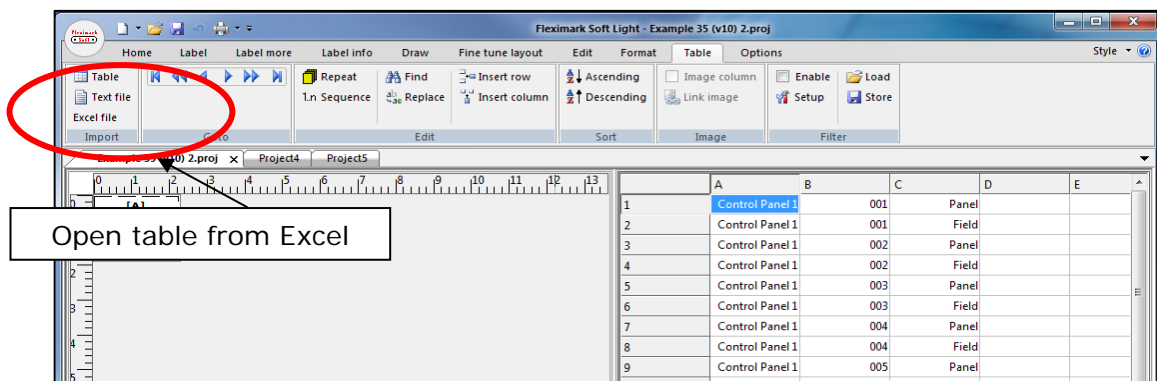


## Importing from Microsoft Excel

With the Fleximark V10 software you are able to import table data directly from Microsoft excel. The file format must be in the \*.xls format (ie Excel version 97-03). In new versions of Excel 2007 and 2010 you can save \*.xls files by selecting File-Save as... Excel version 97-2003.

In Fleximark to import an excel file select Table->Import->Excel... If you try and open an Excel 2007 and 2010 \*.xlsx file you will receive an error ("Can not open file").

Also make sure you close the excel file in Microsoft excel before trying to open in Flexiprint. If the file is already open in excel you will get the same error message.

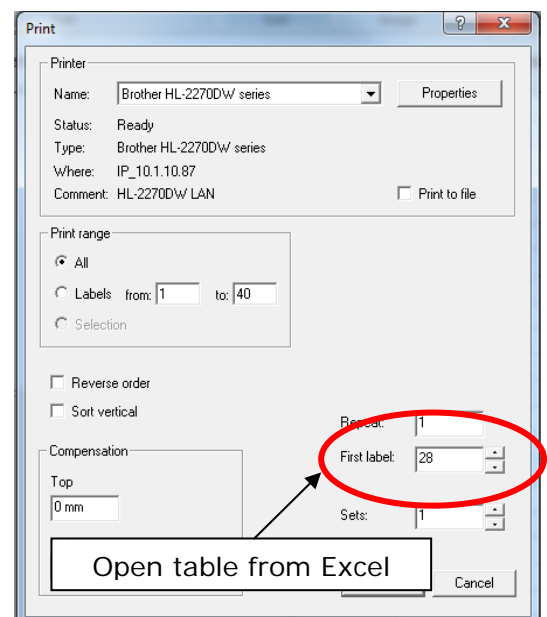


Open table from Excel

## Reusing Existing Labels

With the Flexi-Print Labels, PT Transparent Collar Labels, LCK Wrap Around Labels you are able to print some labels, use them, and then reprint on the remaining labels at a later time.

When you select Print then set the "First Label" value to the first free label on your sheet.



Open table from Excel

**"FLEXIMARK**  
*simple marking solutions..."*



**LAPP KABEL**

**Engineering Computer Services Ltd**  
Cnr Te-Rapa & Ruffell Rd  
Hamilton, 3200  
New Zealand

Sales: 0800 849 2211  
Tel: 07 849 2211  
Fax: 07 849 2220

## **Feedback**

[www.lappgroup.co.nz](http://www.lappgroup.co.nz)

We hope this document helps you get up to speed with the features of the Fleximark software. Further to this document if you have and additional questions on the software please feel free to fire these through.

If you have comments regarding this getting started document please also feel free to send these through. We are always trying to improve our service.

Contact: Terry Rayner (based in New Zealand)  
Email: [terry@ecsnz.com](mailto:terry@ecsnz.com)  
DDI: 07 903 2106

LAPP KABEL – New Zealand Product Manager

## **Quick Checklist**

1. Install Software
2. Create a Template
3. Create a Table with some text
4. Print to plain printer paper
5. Get the first label in the correct position using "Compensation" values under "File->Print"
6. Fix and gradual alignment issues by editing the label configuration
7. Change the paper type to "Thick" or "OHP"