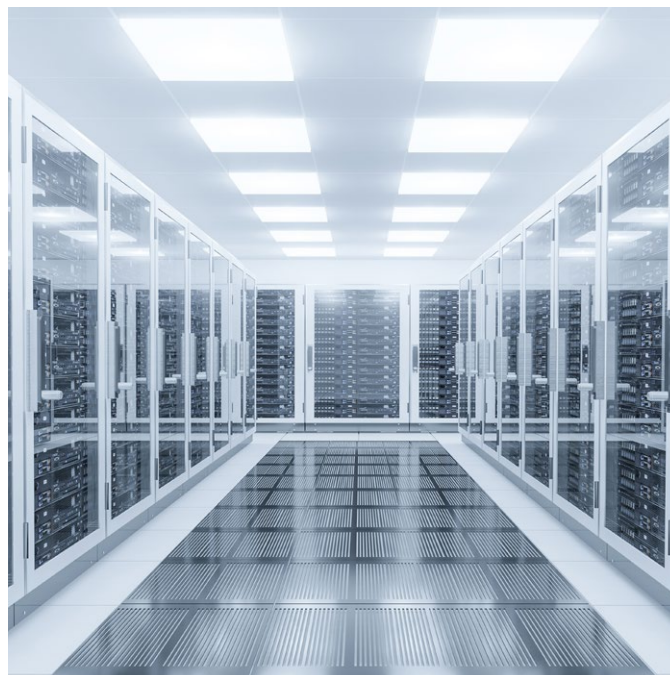
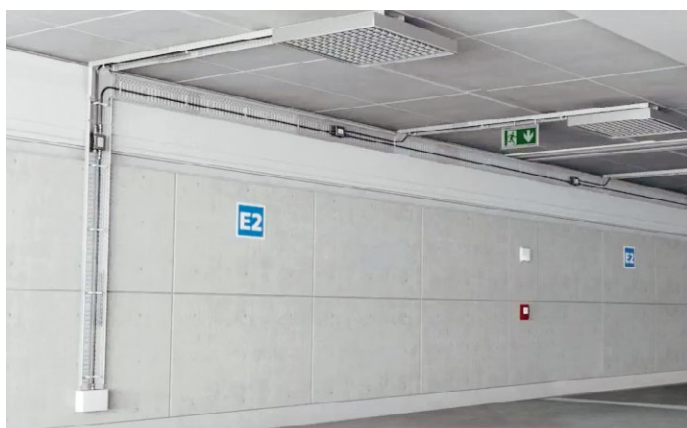


RST®

OUTDOOR LIGHTING SOLUTIONS

Highest Protection Connectors Rated for North America



CONTENTS

RST® MINI	Introduction – RST16	7
	RST16i Plug connectors, 2-5 poles	9
	RST16i Device connectors, 2-5 poles	10
	RST16i Distributors, 2-5 poles	11
	RST16 Accessories	12
RST® CLASSIC	Introduction – RST20	13
	RST20i2/3 Plug connectors, 2-3 poles	15
	RST20i2/3 Device connectors, 2-3 poles	17
	RST20i2/3 Distributors, 2-3 poles	19
	RST20i4/5 Plug connectors, 4-5 poles	20
	RST20i4/5 Device connectors, 4-5 poles	21
	RST20i4/5 Distributors, 4-5 poles	22
	RST20i6/7 Plug connectors, 6-7 poles	23
	RST20i6/7 Device connectors 6-7 poles	24
	RST20i6/7 Splitters 6-7 poles	25
	RST25i3 Plug connectors, splitter, 3-pole	26
	RST25i3 Device connector, 3-pole	27
	RST25i5 Plug connectors, splitter, 5-pole	28
	RST25i5 Device connector, 5-pole	29
	RST16/20 Cable Assemblies	30
	RST20/25 Accessories	31
RST® POWER	Introduction – RST50	33
	RST50i4/5 Plug connectors, device connectors, 4-5 poles	34
	RST50 Accessories	35
Cable Glands	Cable Gland + Vented Plugs at a Glance	36

FAST, EASY + SAFE INSTALLATION

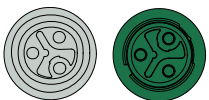
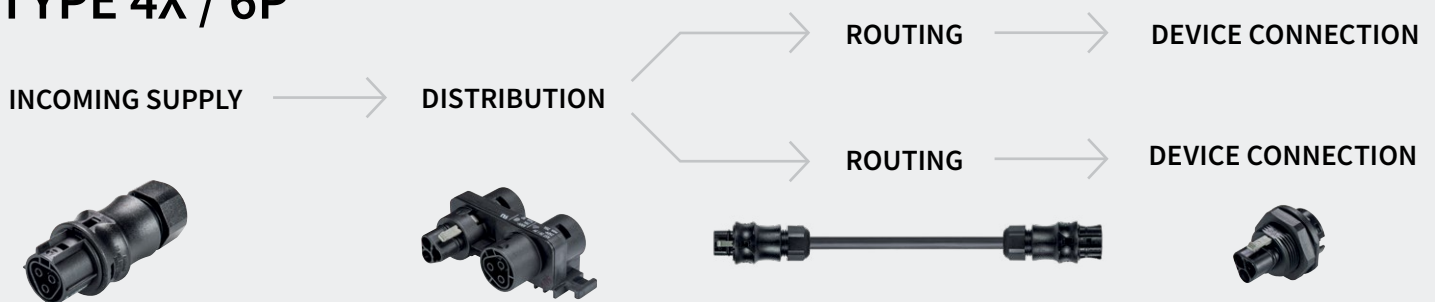
If you could save 75% of the installation time of your electrical system what would you do with the extra time?

Would you win more projects, focus on expanding your operations, or perhaps develop a new product or service?

Time saved is not the only benefit that the RST® pluggable connector system brings to your project. Standard interfaces and custom cable assemblies allow you to plan ahead with confidence. Respond quickly to change requests, reuse components, and ensure a long service life for the installation.

RST® SYSTEM OVERVIEW

TYPE 4X / 6P



SMART CODING

RST® connectors ensure the highest degree of **safety** and **error-free installation** with color and mechanical coding.

SYSTEM BENEFITS

- ▶ Waterproof against high-pressure water jets
- ▶ Optional water seal for added protection when unmated
- ▶ Flexible & modular
- ▶ Fast installation & easy changes or expansions
- ▶ Resource-efficient
- ▶ Reusable & safe

FEATURES AT A GLANCE

- ▶ Type 4X / 6P
- ▶ Rated up to 600 V and 53 A
- ▶ Pre-assembled cable harnesses and distribution units
- ▶ Locking mechanism
- ▶ Color & mechanical coding

SUCCESS STORY

VERTICAL CITY FARM APPLICATION

To help with a new vertical farm installation, Wieland provided its customer with a waterproof, pluggable and easy to install electrical system for its grow lights. Our engineering department worked closely with the customer to come up with a **customized electrical architecture**. The pluggable nature of the installation **saved 70% of installation time** compared to what a typical pipe and wire installation would have required.

By providing our customer with **custom cable harnesses**, they could easily replicate the system in subsequent farms, knowing exactly the lengths and type of connectors they would need. This allowed the customer to expand their business quicker and gain customers faster than their competitor. In addition, the smart coding system of the connectors **eliminated installation errors** and did not require a special skills worker to be installed.

CONVENTIONAL INSTALLATION



20 MIN

STEPS:

- **POWER DISTRIBUTION:**
 - ① Cut the cable to length
 - ② Strip the cable sheath
 - ③ Insert the cable into the junction box
 - ④ Strip the wire insulation
 - ⑤ Connect the individual wires
 - ⑥ Close the junction box
- **LIGHTING INSTALLATION:**
 - ① Open the luminaire
 - ② Cut the cable to length
 - ③ Insert the wire into the luminaire
 - ④ Strip the wire insulation
 - ⑤ Connect the individual wires
 - ⑥ Close the luminaire

PLUGGABLE INSTALLATION FROM WIELAND WITH RST®



4 MIN

STEPS:

- **POWER DISTRIBUTION:**
 - ① Cable assemblies made to order based on your specifications
 - ② Plug into distribution block
- **LIGHTING INSTALLATION:**
 - ① Plug & turn on!

ADDITIONAL ADVANTAGES OVER CONVENTIONAL INSTALLATION:

- + Touch-safe
- + Simple cable layout
- + Plug & play replacement of devices
- + Easy expansions or modifications
- + Reusable
- + Smart coding
- + Integrated locking and strain relief

THREE SIZES FIT **ANY APPLICATION**



RST® POWER

Greatest amount of energy for power-intensive applications.

4 and 5 poles,
Rated to 600 V, 53 A



RST® CLASSIC

All-purpose connector with the broadest portfolio

2 to 7 poles,
Rated to 600 V, 20 A (25 A)



RST® MINI

Small connector for extremely confined spaces

2 to 5 poles,
Rated to 600 V, 16 A

ENCLOSURE RATINGS EXPLAINED

IP Ratings:

- | | |
|-------------|---|
| IP65 | Dust tight & protected against water from a nozzle |
| IP66 | Dust tight & protected against powerful jets of water |
| <hr/> | |
| IP67 | Dust tight & protected against temporary submersion (30min) |
| IP68 | Dust tight & protected against extended submersion |
| <hr/> | |
| IP69 | Dust tight & protected against high temperature, high pressure water, and steam |

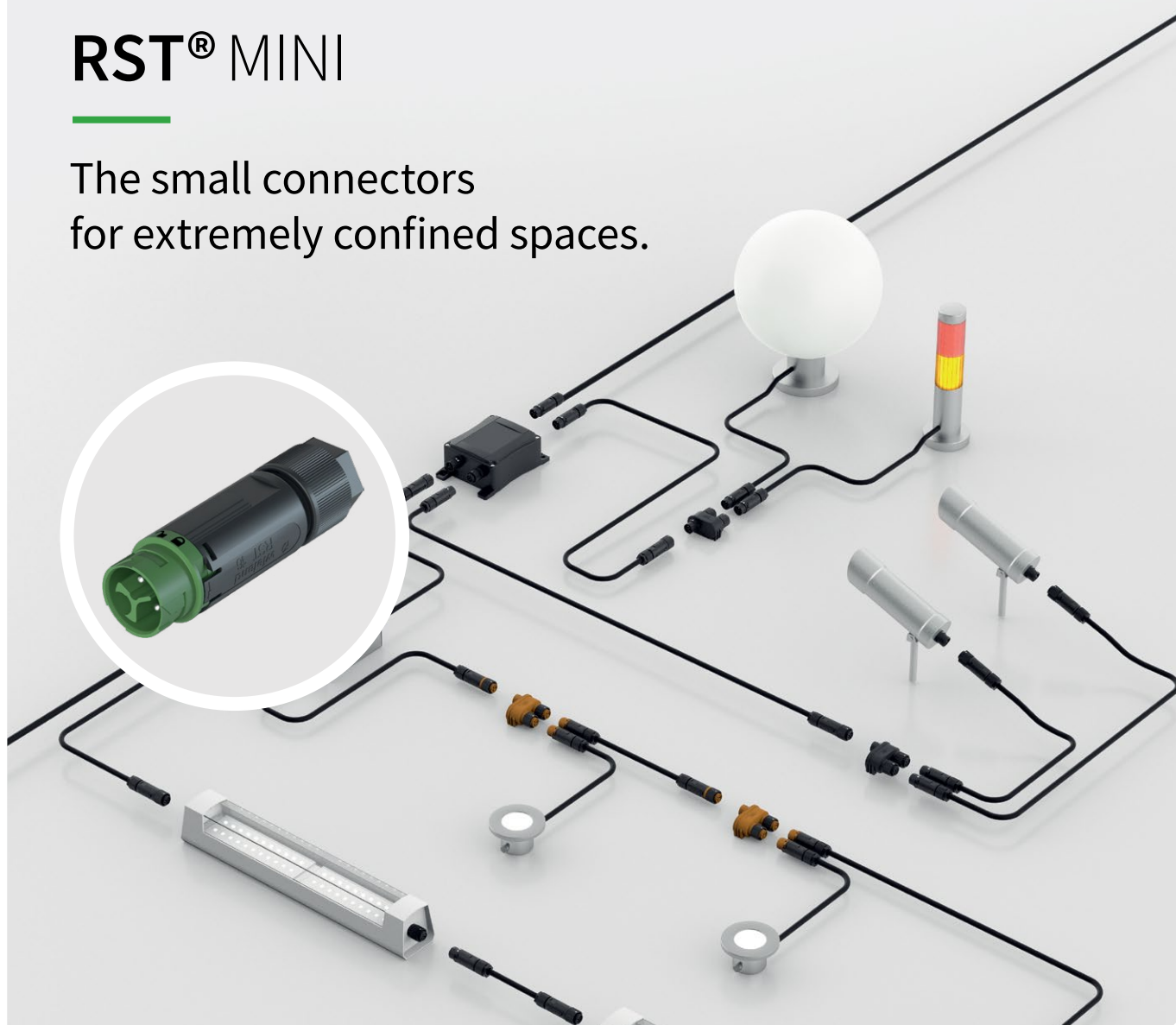
Type Ratings:

- | | |
|----------------|--|
| Type 4 | Protection against dust, ice and hose-directed water |
| Type 4X | Type 4 protection + protection against corrosion |
| <hr/> | |
| Type 6 | Protection against dust, ice and temporary submersion |
| Type 6P | Type 6 + protection against prolonged submersion (1.8m; 24h) |

All Wieland RST® connectors have a Type 4X, Type 6P or both types of protection!

RST® MINI

The small connectors
for extremely confined spaces.



FEATURES

- + 2 to 5 poles
- + Rated up to 600 V and 16 A
- + Mechanical + color coding
- + Locking mechanism
- + Protection up to Type 4X / 6P

APPLICATIONS

- + Outdoor and high moisture environments
- + Small spaces
- + Great for luminaire connection

RST16i2



Mechanical coding (pole configuration based on female connector)

black

light gray

light blue

turquoise

signal brown

Operating voltage (application)

up to 600 V

RST16i3



Mechanical coding (pole configuration based on female connector)

black

light gray

leaf green

light blue

turquoise

signal brown

Operating voltage (application)

up to 600 V

RST16i4



Mechanical coding (pole configuration based on female connector)

black

light gray

signal brown

Operating voltage (application)

up to 600 V

RST16i5



Mechanical coding (pole configuration based on female connector)

black

light gray

turquoise



signal brown

Operating voltage (application)

up to 600 V

RST16I, CONNECTOR, 2-5 POLES

SCREW CONNECTION

TECHNICAL DATA				
	2/3 Poles		4/5 Poles	
	IEC		IEC	
Cable Ø	5.0 - 9.5 mm		7.1 - 13 mm	
Voltage	250/400 V	600 V	250/400 V	600 V
Current	16 A		16 A	
Wire Size	0.25 - 1.5 mm ²	24 - 16 AWG	0.25 - 2.5 mm ²	22 - 16 AWG
Protection	IP69	Type 4X	IP69	Type 4X / 6P
Disconnect Under Load		300 Vac / 16 A		350 Vac / 16 A

female

male



straight, for cables Ø 5-9.5 mm

Color of coding	Poles	female Part no.	male Part no.
■ black	2	46.031.4554.1	46.032.4554.1
□ light gray	2	46.031.4554.0	46.032.4554.0
■ light blue	2	46.031.4554.9	46.032.4554.9
■ turquoise blue	2	46.031.4551.6	46.032.4551.6
■ signal brown	2	46.031.4551.4	46.032.4551.4

female

male



straight, for cables Ø 5-9.5 mm

Color of coding	Poles	female Part no.	male Part no.
■ black	3	46.031.4553.1	46.032.4553.1
□ light gray	3	46.031.4553.0	46.032.4553.0
■ leaves green	3	46.031.4555.7	46.032.4555.7
■ light blue	3	46.031.4553.9	46.032.4553.9
■ turquoise blue	3	46.031.4550.6	46.032.4550.6
■ signal brown	3	46.031.4550.4	46.032.4550.4

female

male



straight, for cables Ø 7.1-13 mm

Color of coding	Poles	female Part no.	male Part no.
■ black	4	46.051.4554.1	46.052.4554.1
□ light gray	4	46.051.4554.0	46.052.4554.0
■ signal brown	4	46.051.4551.4	46.052.4551.4

female

male





straight, for cables Ø 7.1-13 mm

Color of coding	Poles	female Part no.	male Part no.
■ black	5	46.051.4553.1	46.052.4553.1
□ light gray	5	46.051.4553.0	46.052.4553.0
■ turquoise blue	5	46.051.4553.6	46.052.4553.6
■ signal brown	5	46.051.4550.4	46.052.4550.4

RST16I, DEVICE CONNECTOR, 2-5 POLES

SCREW CONNECTION

TECHNICAL DATA				
	2/3 Poles		4/5 Poles	
	IEC		IEC	
Thread Size	M16		M20	
Voltage	250/400 V	600 V	250/400 V	600 V
Current	16 A		16 A	
Wire Size	0.25 - 1.5 mm ²	24 - 16 AWG	0.25 - 2.5 mm ²	22 - 16 AWG
Protection	IP69	Type 4X	IP69	Type 4X / 6P
Disconnect Under Load		300 Vac / 16 A		350 Vac / 16 A

female

male



standard, straight, M16

Color of coding	Poles	female Part no.	male Part no.
■ black	2	46.031.5054.1	46.032.5054.1
□ light gray	2	46.031.5054.0	46.032.5054.0
■ light blue	2	46.031.5054.9	46.032.5054.9
■ turquoise blue	2	46.031.5051.6	46.032.5051.6
■ signal brown	2	46.031.5051.4	46.032.5051.4

female

male



standard, straight, M16

Color of coding	Poles	female Part no.	male Part no.
■ black	3	46.031.5053.1	46.032.5053.1
□ light gray	3	46.031.5053.0	46.032.5053.0
■ leaves green	3	46.031.5055.7	46.032.5055.7
■ light blue	3	46.031.5053.9	46.032.5053.9
■ turquoise blue	3	46.031.5050.6	46.032.5050.6
■ signal brown	3	46.031.5050.4	46.032.5050.4

female

male



standard, straight, M20

Color of coding	Poles	female Part no.	male Part no.
■ black	4	46.051.5054.1	46.052.5054.1
□ light gray	4	46.051.5054.0	46.052.5054.0
■ signal brown	4	46.051.5051.4	46.052.5051.4

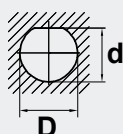
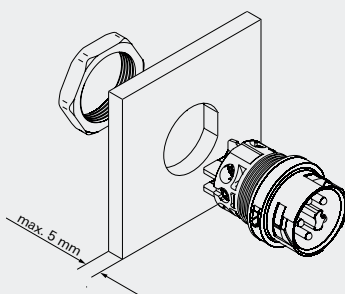
female

male



standard, straight, M20

Color of coding	Poles	female Part no.	male Part no.
■ black	5	46.051.5053.1	46.052.5053.1
□ light gray	5	46.051.5053.0	46.052.5053.0
■ light blue	5	46.051.5053.9	46.052.5053.9
■ turquoise blue	5	46.051.5053.6	46.052.5053.6
■ signal brown	5	46.051.5050.4	46.052.5050.4





TWIST PROTECTION

The flat section on the the thread prevents the connector from rotating!

Product	Hole Size	D	d	Panel thickness
RST16i	M16	16.2 ± 0.1	14.6 ± 0.1	5 mm
RST16i	M20	20.4 ± 0.1	19.4 ± 0.1	5 mm

RST16I, DISTRIBUTOR, 2-5 POLES

TECHNICAL DATA				
	2/3 Poles		4/5 Poles	
	IEC		IEC	
Cable Ø	5.0 - 9.5 mm		7.1 - 13 mm	
Voltage	250/400 V	600 V	250/400 V	600 V
Current	16 A		16 A	
Wire Size	0.25 - 1.5 mm²	24 - 16 AWG	0.25 - 2.5 mm²	22 - 16 AWG
Protection	IP69	Type 4X	IP69	Type 4X / 6P
Disconnect Under Load		300 Vac / 16 A		350 Vac / 16 A



distribution block 1I / 20, parallel connection, with fastening option to mounting plate 06.562.5853.0 / 06.562.5853.1

Color of coding	Poles	Part no.
■ black	2/3	46.030.1253.1
□ light gray	2/3	46.030.1253.0
■ leaves green	3	46.030.1255.7
■ light blue	2/3	46.030.1253.9
■ turquoise blue	2/3	46.030.1250.6
■ signal brown	2/3	46.030.1250.4



compact distributor 1I / 30, parallel connection, with fastening option to mounting plate 06.562.5853.0 / 06.562.5853.1

Color of coding	Poles	Part no.
■ black	2/3	
□ light gray	2/3	
■ leaves green	3	Please contact us for part numbers and options.
■ light blue	2/3	
■ turquoise blue	2/3	
■ signal brown	2	



distribution block 1I / 20, parallel connection, with fastening option to mounting plate 06.562.5853.0 / 06.562.5853.1

Color of coding	Poles	Part no.
■ black	4/5	46.050.1253.1
□ light gray	4/5	46.050.1253.0
■ light blue	5	46.050.1253.9
■ turquoise blue	5	46.050.1253.6
■ signal brown	4/5	46.050.1250.4



compact distributor 1I / 30, parallel connection, with fastening option to mounting plate 06.562.5853.0 / 06.562.5853.1

Color of coding	Poles	Marking of poles	Part no.
■ black	4/5		
□ light gray	4/5		
■ light blue	5	Please contact us for part numbers and options.	
■ turquoise blue	5		
■ signal brown	4/5		

RST16, ACCESSORIES



Cover piece, tethered

Color	Poles	for male	for female
		Part no.	Part no.
■ black	2/3	06.563.8953.1	06.563.8753.1
□ light gray	2/3	06.563.8953.0	06.563.8753.0
■ black	4/5	06.563.9353.1	06.563.9153.1
□ light gray	4/5	06.563.9353.0	06.563.9153.0



Cover piece, untethered

Color	Poles	for male	for female
		Part no.	Part no.
■ black	2/3	06.563.8853.1	06.563.8653.1
□ light gray	2/3	06.563.8853.0	06.563.8653.0
■ black	4/5	06.563.9253.1	06.563.9053.1
□ light gray	4/5	06.563.9253.0	06.563.9053.0



Sealing ring

Color	Ø size	Part no.
■ black	5.0 - 9.5 mm	06.562.0583.0
■ black	7.1 - 13 mm	06.561.8383.0



Mounting plate, for distribution terminal block

Color	Part no.
■ black	06.562.5853.1
□ light gray	06.562.5853.0



Sample case, RST16i3

Part no.
99.674.0000.0



Sample case, RST16i5

Part no.
99.675.0000.0

RST® CLASSIC

The all-purpose connector with the most extensive range.



FEATURES

- + 2 to 7 poles
- + Rated up to 20 A and 600 V
- + 25 A option
- + Mechanical + color coding
- + Optional integrated contact seal
- + Protection up to Type 4X / 6P

APPLICATIONS

- + Outdoor and high-moisture environments
- + Higher electrical loads
- + Ideal for greenhouses and vertical farms
- + Anywhere fast changes and modular designs are needed
- + Applications in protection class II and extra-low voltage for LED technology

RST20i2



Mechanical coding (pole configuration based on female connector)

black

light gray

pebble gray

signal brown

Operating voltage (application)

up to 600 V

RST20i3



Mechanical coding (pole configuration based on female connector)

black

light gray

leaf green

light blue

signal brown

Operating voltage (application)

up to 600 V

RST20i4



Mechanical coding (pole configuration based on female connector)

black

light gray

signal brown

Operating voltage (application)

up to 600 V

RST20i5



Mechanical coding (pole configuration based on female connector)

black

light gray

turquoise

light blue

yellow

signal brown

Operating voltage (application)

up to 600 V

RST20i6



Mechanical coding (pole configuration based on female connector)

turquoise

Operating voltage (application)

up to 600 V

RST20i7



Mechanical coding (pole configuration based on female connector)

black

light gray

turquoise

light blue

Operating voltage (application)

up to 600 V

RST25i3



Mechanical coding (pole configuration based on female connector)

Concrete gray

Operating voltage (application)

up to 600 V

RST25i5



Mechanical coding (pole configuration based on female connector)




Concrete gray

Operating voltage (application)

up to 600 V

RST20I, CONNECTOR, 2/3 POLES

TECHNICAL DATA

	2/3 Poles (screw)		2/3 Poles (spring)	
	IEC		IEC	
Cable Ø	6 - 10 mm / 10 - 14 mm / 13 mm - 18 mm			
Voltage	250/400 V	600 V	250/400 V	600 V
Current	20 A	20 A	20 A	20 A (USA) 15 A (Canada)
Wire Size	0.75 - 6 mm ²	16 - 10 AWG  16-12 AWG	0.50 - 2.5mm ²	20 - 14 AWG
Protection	IP69	Type 4X / 6P	IP69	Type 4X/6P
Disconnect Under Load		400 Vac / 20 A (USA) 350 Vac / 20 A (Canada)		N/A

female

male



Straight, for cables Ø 6-10 mm

Color of coding	Poles	Screw connection		Spring clamp connection	
		female	male	female	male
■ black	2	96.021.4053.1	96.022.4053.1	96.021.0053.1	96.022.0053.1
□ light gray	2	96.021.4053.0	96.022.4053.0	96.021.0053.0	96.022.0053.0
■ pebble gray	2	96.021.4050.8	96.022.4050.8	96.021.0050.8	96.022.0050.8
■ signal brown	2	96.021.4051.4	96.022.4051.4	96.021.0051.4	96.022.0051.4

female

male



Straight, for cables Ø 10-14 mm

Color of coding	Poles	Screw connection		Spring clamp connection	
		female	male	female	male
■ black	2	96.021.4153.1	96.022.4153.1	96.021.0153.1	96.022.0153.1
□ light gray	2	96.021.4153.0	96.022.4153.0	96.021.0153.0	96.022.0153.0
■ pebble gray	2	96.021.4150.8	96.022.4150.8	96.021.0150.8	96.022.0150.8
■ signal brown	2	96.021.4151.4	96.022.4151.4	96.021.0151.4	96.022.0151.4

female

male



Straight, for cables Ø 6-10 mm

Color of coding	Poles	Screw connection		Spring clamp connection	
		female	male	female	male
■ black	3	96.031.4053.1	96.032.4053.1	96.031.0053.1	96.032.0053.1
□ light gray	3	96.031.4053.0	96.032.4053.0	96.031.0053.0	96.032.0053.0
■ leaves green	3	96.031.4055.7	96.032.4055.7	96.031.0055.7	96.032.0055.7
■ light blue	3	96.031.4053.9	96.032.4053.9	96.031.0053.9	96.032.0053.9
■ signal brown	3	96.031.4051.4	96.032.4051.4	96.031.0051.4	96.032.0051.4

female

male



Straight, for cables Ø 10-14 mm

Color of coding	Poles	Screw connection		Spring clamp connection	
		female	male	female	male
■ black	3	96.031.4153.1	96.032.4153.1	96.031.0153.1	96.032.0153.1
□ light gray	3	96.031.4153.0	96.032.4153.0	96.031.0153.0	96.032.0153.0
■ leaves green	3	96.031.4155.7	96.032.4155.7	96.031.0155.7	96.032.0155.7
■ light blue	3	96.031.4153.9	96.032.4153.9	96.031.0153.9	96.032.0153.9
■ signal brown	3	96.031.4151.4	96.032.4151.4	96.031.0151.4	96.032.0151.4

female

male






Straight, for cables Ø 13-18 mm

Color of coding	Poles	Screw connection		Spring clamp connection	
		female	male	female	male
■ black	3	96.031.4553.1	96.032.4553.1		
□ light gray	3	96.031.4553.0	96.032.4553.0		
■ leaves green	3	96.031.4555.7	96.032.4555.7	96.031.0555.7	96.032.0555.7
■ light blue	3	96.031.4553.9	96.032.4553.9	96.031.0553.9	96.032.0553.9

RST20I, CONNECTOR, 2/3 POLES

TECHNICAL DATA

	2/3 Poles (screw)		2/3 Poles (spring)	
	IEC		IEC	
Cable Ø	6 - 10 mm / 10 - 14 mm			
Voltage	250/400 V	600 V	250/400 V	600 V
Current	20 A	20 A	20 A	20 A (USA) 15 A (Canada)
Wire Size	0.75 - 6 mm ²	16 - 10 AWG  16-12 AWG	0.50 - 2.5mm ²	20 - 14 AWG
Protection	IP69	Type 4X / 6P	IP69	Type 4X/6P
Disconnect Under Load		400 Vac / 20 A (USA) 350 Vac / 20 A (Canada)		N/A

female



male



angled 90°, for cables Ø 6-10 mm

Color of coding	Poles	Screw Connection		Spring Clamp Connection	
		female	male	female	male
■ black	2	96.023.4053.1	96.024.4053.1	96.023.0053.1	96.024.0053.1
□ light gray	2	96.023.4053.0	96.024.4053.0	96.023.0053.0	96.024.0053.0
■ pebble gray	2	96.023.4050.8	96.024.4050.8	96.023.0050.8	96.024.0050.8
■ signal brown	2	96.023.4051.4	96.024.4051.4	96.023.0051.4	96.024.0051.4

female



male



angled 90°, for cables Ø 10-14 mm

Color of coding	Poles	Screw connection		Spring clamp connection	
		female	male	female	male
■ black	2	96.023.4153.1	96.024.4153.1	96.023.0153.1	96.024.0153.1
□ light gray	2	96.023.4153.0	96.024.4153.0	96.023.0153.0	96.024.0153.0
■ pebble gray	2	96.023.4150.8	96.024.4150.8	96.023.0150.8	96.024.0150.8
■ signal brown	2	96.023.4151.4	96.024.4151.4	96.023.0151.4	96.024.0151.4

female



male



angled 90°, for cables Ø 6-10 mm

Color of coding	Poles	Screw connection		Spring clamp connection	
		female	male	female	male
■ black	3	96.033.4053.1	96.034.4053.1	96.033.0053.1	96.034.0053.1
□ light gray	3	96.033.4053.0	96.034.4053.0	96.033.0053.0	96.034.0053.0
■ leaves green	3	96.033.4055.7	96.034.4055.7	96.033.0055.7	96.034.0055.7
■ light blue	3	96.033.4053.9	96.034.4053.9	96.033.0053.9	96.034.0053.9
■ signal brown	3	96.033.4051.4	96.034.4051.4	96.033.0051.4	96.034.0051.4

female



male






angled 90°, for cables Ø 10-14 mm

Color of coding	Poles	Screw connection		Spring clamp connection	
		female	male	female	male
■ black	3	96.033.4153.1	96.034.4153.1	96.033.0153.1	96.034.0153.1
□ light gray	3	96.033.4153.0	96.034.4153.0	96.033.0153.0	96.034.0153.0
■ leaves green	3	96.033.4155.7	96.034.4155.7	96.033.0155.7	96.034.0155.7
■ light blue	3	96.033.4153.9	96.034.4153.9	96.033.0153.9	96.034.0153.9
■ signal brown	3	96.033.4151.4	96.034.4151.4	96.033.0151.4	96.034.0151.4

RST20I, DEVICE CONNECTOR, M20, 2/3 POLES

TECHNICAL DATA

	2/3 Poles (screw)		2/3 Poles (spring)	
	IEC		IEC	
Thread Size	M20			
Voltage	250/400 V	600 V	250/400 V	600 V
Current	20 A	20 A	20 A	20 A (USA) 15 A (Canada)
Wire Size	0.75 - 6 mm ²	16 - 10 AWG  16-12 AWG	0.50 - 2.5mm ²	20 - 14 AWG
Protection	IP69	Type 4X / 6P	IP69	Type 4X/6P
Disconnect Under Load		400 Vac / 20 A (USA) 350 Vac / 20 A (Canada)		N/A

female

male



modular, straight

Color of coding	Poles	Screw connection		Spring clamp connection	
		female	male	female	male
■ black	2	96.021.6053.1	96.022.6053.1	96.021.2053.1	96.022.2053.1
□ light gray	2	96.021.6053.0	96.022.6053.0	96.021.2053.0	96.022.2053.0
■ pebble gray	2	96.021.6050.8	96.022.6050.8	96.021.2050.8	96.022.2050.8
■ signal brown	2	96.021.6051.4	96.022.6051.4	96.021.2051.4	96.022.2051.4

female

male



modular, angled 90°

Color of coding	Poles	Screw connection		Spring clamp connection	
		female	male	female	male
■ black	2	96.023.6053.1	96.024.6053.1	96.023.2053.1	96.024.2053.1
□ light gray	2	96.023.6053.0	96.024.6053.0	96.023.2053.0	96.024.2053.0
■ pebble gray	2	96.023.6050.8	96.024.6050.8	96.023.2050.8	96.024.2050.8
■ signal brown	2	96.023.6051.4	96.024.6051.4	96.023.2051.4	96.024.2051.4

female

male



modular, straight

Color of coding	Poles	Screw connection		Spring clamp connection	
		female	male	female	male
■ black	3	96.031.6053.1	96.032.6053.1	96.031.2053.1	96.032.2053.1
□ light gray	3	96.031.6053.0	96.032.6053.0	96.031.2053.0	96.032.2053.0
■ leaves green	3	96.031.6055.7	96.032.6055.7	96.031.2055.7	96.032.2055.7
■ light blue	3	96.031.6053.9	96.032.6053.9	96.031.2053.9	96.032.2053.9
■ signal brown	3	96.031.6051.4	96.032.6051.4	96.031.2051.4	96.032.2051.4

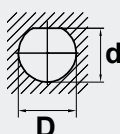
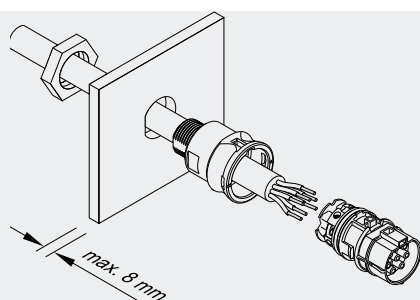
female

male



modular, angled 90°

Color of coding	Poles	Screw connection		Spring clamp connection	
		female	male	female	male
■ black	3	96.033.6053.1	96.034.6053.1	96.033.2053.1	96.034.2053.1
□ light gray	3	96.033.6053.0	96.034.6053.0	96.033.2053.0	96.034.2053.0
■ leaves green	3	96.033.6055.7	96.034.6055.7	96.033.2055.7	96.034.2055.7
■ light blue	3	96.033.6053.9	96.034.6053.9	96.033.2053.9	96.034.2053.9
■ signal brown	3	96.033.6051.4	96.034.6051.4	96.033.2051.4	96.034.2051.4






TWIST PROTECTION

The flat section on the the thread prevents the connector from rotating!

Product	Hole Size	D	d	Panel thickness
RST20i	M20	20.4 ^{-0.2}	19.0 ^{-0.2}	8 mm
RST20i	M25	25.4 ^{-0.2}	23.9 ^{-0.2}	8 mm

RST20I, DEVICE CONNECTOR, M25, 2/3 POLES

TECHNICAL DATA

	2/3 Poles (screw)		2/3 Poles (spring)	
	IEC		IEC	
Cable Ø	6 - 10 mm / 10 - 14 mm / 13 mm - 18 mm			
Voltage	250/400 V	600 V	250/400 V	600 V
Current	20 A	20 A	20 A	20 A (USA) 15 A (Canada)
Wire Size	0.75 - 6 mm²	16 - 10 AWG  16-12 AWG	0.50 - 2.5mm²	20 - 14 AWG
Protection	IP69	Type 4X / 6P	IP69	Type 4X/6P
Disconnect Under Load		400 Vac / 20 A (USA) 350 Vac / 20 A (Canada)		N/A

female

male



Standard, straight

Color of coding	Poles	Screw connection		Spring clamp connection	
		female	male	female	male
■ black	2	96.021.5053.1	96.022.5053.1	96.021.1053.1	96.022.1053.1
□ light gray	2	96.021.5053.0	96.022.5053.0	96.021.1053.0	96.022.1053.0
■ pebble gray	2	96.021.5050.8	96.022.5050.8	96.021.1050.8	96.022.1050.8
■ signal brown	2	96.021.5051.4	96.022.5051.4	96.021.1051.4	96.022.1051.4

female

male



Modular, angled 90°

Color of coding	Poles	Screw connection		Spring clamp connection	
		female	male	female	male
■ black	2	96.023.6253.1	96.024.6253.1	96.023.2253.1	96.024.2253.1
□ light gray	2	96.023.6253.0	96.024.6253.0	96.023.2253.0	96.024.2253.0
■ pebble gray	2	96.023.6250.8	96.024.6250.8	96.023.2250.8	96.024.2250.8
■ signal brown	2	96.023.6251.4	96.024.6251.4	96.023.2251.4	96.024.2251.4

female

male



Standard, straight

Color of coding	Poles	Screw connection		Spring clamp connection	
		female	male	female	male
■ black	3	96.031.5053.1	96.032.5053.1	96.031.1053.1	96.032.1053.1
□ light gray	3	96.031.5053.0	96.032.5053.0	96.031.1053.0	96.032.1053.0
■ leaves green	3	96.031.5055.7	96.032.5055.7	96.031.1055.7	96.032.1055.7
■ light blue	3	96.031.5053.9	96.032.5053.9	96.031.1053.9	96.032.1053.9
■ signal brown	3	96.031.5051.4	96.032.5051.4	96.031.1051.4	96.032.1051.4

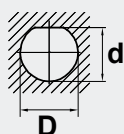
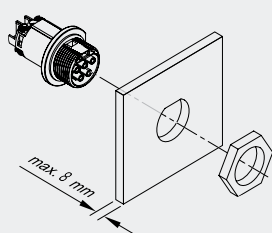
female

male



Modular, angled 90°

Color of coding	Poles	Screw connection		Spring clamp connection	
		female	male	female	male
■ black	3	96.033.6253.1	96.034.6253.1	96.033.2253.1	96.034.2253.1
□ light gray	3	96.033.6253.0	96.034.6253.0	96.033.2253.0	96.034.2253.0
■ leaves green	3	96.033.6255.7	96.034.6255.7	96.033.2255.7	96.034.2255.7
■ light blue	3	96.033.6253.9	96.034.6253.9	96.033.2253.9	96.034.2253.9
■ signal brown	3	96.033.6251.4	96.034.6251.4	96.033.2251.4	96.034.2251.4



TWIST PROTECTION

The flat section on the the thread prevents the connector from rotating!

Product	Hole Size	D	d	Panel thickness
RST20i	M20	20.4 ^{-0.2}	19.0 ^{-0.2}	8 mm
RST20i	M25	25.4 ^{-0.2}	23.9 ^{-0.2}	8 mm

RST20I, DISTRIBUTOR, 2/3 POLES



TECHNICAL DATA

Rated current:	20 A	Lockable:	self-locking (unlocking by tool)
Degree of protection (IP):	IP66/68 (3m;2h) / IP69	Contact us for part numbers and additional options.	
	Type 4X / 6P		

distribution block 1I / 30, parallel connection

Color of coding	Poles	With fastening option	Without fastening option
■ black	2	96.020.0153.1	96.020.0253.1
□ light gray	2	96.020.0153.0	96.020.0253.0
■ pebble gray	2	96.020.0150.8	96.020.0250.8
■ signal brown	2	96.020.0151.4	96.020.0251.4

distribution block 1I / 30, parallel connection, with fastening option

Color of coding	Poles	With fastening option	Without fastening option
■ black	3	96.030.0153.1	96.030.0253.1
□ light gray	3	96.030.0153.0	96.030.0253.0
■ leaves green	3	96.030.0155.7	96.030.0255.7
■ light blue	3	96.030.0153.9	
■ signal brown	3	96.030.0151.4	96.030.0251.4

multi-distribution unit 1I / 70, parallel connection, with fastening option


Color of coding	Poles	Part no.
■ black	2/3	Distribution units made to specifications. Please contact us for options.
■ signal brown	2/3	

compact distributor 1I / 30, parallel connection, with fastening option

Color of coding	Poles	Part no.
■ black	2/3	Distribution units made to specifications. Please contact us for options.

RST20I, CONNECTOR, 4/5 POLES

SCREW CONNECTION

TECHNICAL DATA		
	4/5 Poles	
	IEC	
Cable Ø	6 - 10 mm / 10 - 14 mm / 13 mm - 18 mm	
Voltage	250/400 V	600 V
Current	20 A	20 A
Wire Size	0.75 - 4 mm²	18 - 14 AWG
Protection	IP69	Type 4X / 6P
Disconnect Under Load		350 Vac / 20 A (Canada only)

female



male



straight, for cables Ø 6-10 mm

Color of coding	Poles	female Part no.	male Part no.
■ black	4	96.041.4053.1	96.042.4053.1
□ light gray	4	96.041.4053.0	96.042.4053.0
■ signal brown	4	96.041.4051.4	96.042.4051.4

Color of coding	Poles	female Part no.	male Part no.
■ black	5	96.051.4053.1	96.052.4053.1
□ light gray	5	96.051.4053.0	96.052.4053.0
■ light blue	5	96.051.4053.9	96.052.4053.9
■ turquoise blue	5	96.051.4053.6	96.052.4053.6
■ yellow	5	96.051.4053.2	96.052.4053.2
■ signal brown	5	96.051.4051.4	96.052.4051.4

female



male



straight, for cables Ø 10-14 mm

Color of coding	Poles	female Part no.	male Part no.
■ black	4	96.041.4153.1	96.042.4153.1
□ light gray	4	96.041.4153.0	96.042.4153.0
■ signal brown	4	96.041.4151.4	96.042.4151.4

Color of coding	Poles	female Part no.	male Part no.
■ black	5	96.051.4153.1	96.052.4153.1
□ light gray	5	96.051.4153.0	96.052.4153.0
■ light blue	5	96.051.4153.9	96.052.4153.9
■ turquoise blue	5	96.051.4153.6	96.052.4153.6
■ yellow	5	96.051.4153.2	96.052.4153.2
■ signal brown	5	96.051.4151.4	96.052.4151.4

female



male



straight, for cables Ø 13-18 mm

Color of coding	Poles	female Part no.	male Part no.
■ black	4	96.041.4553.1	96.042.4553.1
□ light gray	4	96.041.4553.0	96.042.4553.0

Color of coding	Poles	female Part no.	male Part no.
■ black	5	96.051.4553.1	96.052.4553.1
□ light gray	5	96.051.4553.0	96.052.4553.0
■ light blue	5	96.051.4553.9	96.052.4553.9
■ turquoise blue	5	96.051.4553.6	96.052.4553.6
■ yellow	5	96.051.4553.2	96.052.4553.2
■ signal brown	5	96.051.4551.4	96.052.4551.4

female



male



angled 90°, for cables Ø 6-10 mm

Color of coding	Poles	female Part no.
■ black	4	96.143.0053.1
□ light gray	4	96.143.0053.0

Color of coding	Poles	female Part no.	male Part no.
■ black	5	96.053.4053.1	96.054.4053.1
□ light gray	5	96.053.4053.0	96.054.4053.0
■ light blue	5	96.053.4053.9	96.054.4053.9
■ turquoise blue	5	96.053.4053.6	96.054.4053.6
■ signal brown	5	96.053.4051.4	96.054.4051.4

female



male




angled 90°, for cables Ø 10-14 mm

Color of coding	Poles	female Part no.	male Part no.
■ black	4	96.143.0153.1	96.144.0153.1
□ light gray	4	96.143.0153.0	96.144.0153.0

Color of coding	Poles	female Part no.	male Part no.
■ black	5	96.053.4153.1	96.054.4153.1
□ light gray	5	96.053.4153.0	96.054.4153.0
■ light blue	5	96.053.4153.9	96.054.4153.9
■ turquoise blue	5	96.053.4153.6	96.054.4153.6
■ signal brown	5	96.053.4151.4	96.054.4151.4

RST20I, DEVICE CONNECTOR, M20, 4/5 POLES

SCREW CONNECTION

TECHNICAL DATA		
	4/5 Poles	
	IEC	
Thread Size	M20 / M25	
Voltage	250/400 V	600 V
Current	20 A	20 A
Wire Size	0.75 - 4 mm ²	18 - 14 AWG
Protection	IP69	Type 4X / 6P
Disconnect Under Load		350 Vac / 20 A (Canada)

female

male



modular, straight

Color of coding	Poles
■ black	4
□ light gray	4
■ signal brown	4

female

male

Part no.	Part no.
96.041.6053.1	96.042.6053.1
96.041.6053.0	96.042.6053.0
96.041.6051.4	96.042.6051.4

Color of coding	Poles
■ black	5
□ light gray	5
■ light blue	5
■ turquoise blue	5
■ signal brown	5

female

male

Part no.	Part no.
96.051.6053.1	96.052.6053.1
96.051.6053.0	96.052.6053.0
96.051.6053.9	96.052.6053.9
96.051.6053.6	96.052.6053.6
96.051.6051.4	96.052.6051.4

female

male



modular, angled 90°

Color of coding	Poles
■ black	4
□ light gray	4

female

male

Part no.	Part no.
96.043.6053.1	96.044.6053.1
96.043.6053.0	96.044.6053.0

Color of coding	Poles
■ black	5
□ light gray	5
■ light blue	5
■ turquoise blue	5
■ signal brown	5


female

male

Part no.	Part no.
96.053.6053.1	96.054.6053.1
96.053.6053.0	96.054.6053.0
96.053.6053.9	96.054.6053.9
96.053.6053.6	96.054.6053.6
96.053.6051.4	96.054.6051.4

RST20I4, DEVICE CONNECTOR, M25, 4/5 POLES

SCREW CONNECTION

TECHNICAL DATA		
	4/5 Poles	
	IEC	
Thread Size	M20 / M25	
Voltage	250/400 V	600 V
Current	20 A	20 A
Wire Size	0.75 - 4 mm ²	18 - 14 AWG
Protection	IP69	Type 4X / 6P
Disconnect Under Load		350 Vac / 20 A (Canada)

female



male



standard, straight

Color of coding	Poles
■ black	4
□ light gray	4
■ signal brown	4

female

Part no.	Part no.
96.041.5053.1	96.042.5053.1
96.041.5053.0	96.042.5053.0
96.041.5051.4	96.042.5051.4

female

Part no.	Part no.
96.051.5053.1	96.052.5053.1
96.051.5053.0	96.052.5053.0
96.051.5053.9	96.052.5053.9
96.051.5053.6	96.052.5053.6
96.051.5051.4	96.052.5051.4

Color of coding	Poles
■ black	5
□ light gray	5
■ light blue	5
■ turquoise blue	5
■ signal brown	5

female



male



modular, angled 90°

Color of coding	Poles
■ black	4
□ light gray	4
■ signal brown	4

female

Part no.	Part no.
96.043.6253.1	96.044.6253.1
96.043.6253.0	96.044.6253.0
96.043.6251.4	96.044.6251.4

female

Part no.	Part no.
96.053.6253.1	96.054.6253.1
96.053.6253.0	96.054.6253.0
96.053.6253.9	96.054.6253.9
96.053.6253.6	96.054.6253.6
96.053.6251.4	96.054.6251.4

Color of coding	Poles
■ black	5
□ light gray	5
■ light blue	5
■ turquoise blue	5
■ signal brown	5

RST20I, DISTRIBUTOR, 4/5 POLES

TECHNICAL DATA			
Rated current:	20 A	Lockable:	self-locking (unlocking by tool)
Degree of protection (IP):	IP66/68 (3m;2h) / IP69	Additional technical data, see facts & data.	
	Type 4X / 6P		



compact distributor 11 / 30, parallel connection, with fastening option

Color of coding	Poles	Part no.
■ black	4/5	Distribution units made to specifications. Please contact us for options.



compact distributor 11 / 20, parallel connection, with fastening option


Color of coding	Poles	Part no.
■ black	5	Distribution units made to specifications. Please contact us for options.

RST20I, CONNECTOR, 6/7 POLES

SCREW CONNECTION

Optional **water seals** on individual contacts for added protection when unmated.
Contact us for details.

TECHNICAL DATA

	6/7 Poles (screw)	
	IEC	
Cable Ø	6 - 10 mm / 10 - 14 mm / 13 - 18 mm	
Voltage	250/400 V	600 V
Current	3 x 20 A + 4 x 5 A	3 x 20 A + 4 x 5 A (USA) 3 x 16 A + 4 x 2 A (Canada) *Contact us for additional combinations
Wire Size	0.2 - 1.5mm ²	20 - 14 AWG
Protection	IP69	Type 4X/6P

female



male



straight, for cables Ø 6-10 mm





Color of coding	Poles
 turquoise blue	6

female

Part no.
96.061.4053.6

male

Part no.
96.062.4053.6

Color of coding	Poles
 black	7
 light gray	7
 light blue	7
 turquoise blue	7

female

Part no.
96.071.4053.1
96.071.4053.0
96.071.4053.9
96.071.4053.6

male

Part no.
96.072.4053.1
96.072.4053.0
96.072.4053.9
96.072.4053.6

female



male



straight, for cables Ø 10-14 mm





Color of coding	Poles
 turquoise blue	6

female

Part no.
96.061.4153.6

male

Part no.
96.062.4153.6

Color of coding	Poles
 black	7
 light gray	7
 light blue	7
 turquoise blue	7

female

Part no.
96.071.4153.1
96.071.4153.0
96.071.4153.9
96.071.4153.6

male

Part no.
96.072.4153.1
96.072.4153.0
96.072.4153.9
96.072.4153.6


female



male



angled 90°, for cables Ø 6-10 mm





Color of coding	Poles
 turquoise blue	6

female

Part no.
96.063.4053.6

male

Part no.
96.064.4053.6

Color of coding	Poles
 black	7
 light gray	7
 light blue	7
 turquoise blue	7

female

Part no.
96.073.4053.1
96.073.4053.0
96.073.4053.9
96.073.4053.6

male

Part no.
96.074.4053.1
96.074.4053.0
96.074.4053.9
96.074.4053.6


female



male



angled 90°, for cables Ø 10-14 mm





Color of coding	Poles
 turquoise blue	6

female

Part no.
96.063.4153.6

male

Part no.
96.064.4153.6

Color of coding	Poles
 black	7
 light gray	7
 light blue	7
 turquoise blue	7

female


Part no.
96.073.4153.1
96.073.4153.0
96.073.4153.9
96.073.4153.6

male

Part no.
96.074.4153.1
96.074.4153.0
96.074.4153.9
96.074.4153.6

RST20I, DEVICE CONNECTOR, M20, 6/7 POLES

SCREW CONNECTION

TECHNICAL DATA		
	6/7 Poles (screw)	
	IEC	
Thread Size	M20 / M25	
Voltage	250/400 V	600 V
Current	3 x 20 A + 4 x 5 A	3 x 20 A + 4 x 5 A (USA) 3 x 16 A + 4 x 2 A (Canada) *Contact us for additional combinations
Wire Size	0.2 - 1.5mm ²	20 - 14 AWG
Protection	IP69	Type 4X/6P


female

male



modular, straight

Color of coding	Poles
-----------------	-------

 turquoise blue 6

female





male

Part no.
96.061.6053.6

Part no.
96.062.6053.6

modular, straight

Color of coding	Poles
-----------------	-------

 black 7
 light gray 7
 light blue 7
 turquoise blue 7

female

male

Part no.
96.071.6053.1
96.071.6053.0

Part no.
96.072.6053.1
96.072.6053.0

96.071.6053.9
96.071.6053.6

96.072.6053.9
96.072.6053.6


female

male



modular, angled 90°

Color of coding	Poles
-----------------	-------

 turquoise blue 6

female





male

Part no.
96.063.6053.6

Part no.
96.064.6053.6

modular, angled 90°

Color of coding	Poles
-----------------	-------

 black 7
 light gray 7
 light blue 7
 turquoise blue 7

female

male

Part no.
96.073.6053.1
96.073.6053.0

Part no.
96.074.6053.1
96.074.6053.0

96.073.6053.9
96.073.6053.6

96.074.6053.9
96.074.6053.6

RST20I7, DEVICE CONNECTOR, M25, 7 POLES

SCREW CONNECTION


female

male



modular, straight

Color of coding	Poles
-----------------	-------

 turquoise blue 6

female





male

Part no.
96.061.6253.6

Part no.
96.062.6253.6

modular, straight

Color of coding	Poles
-----------------	-------

 black 7
 light gray 7
 light blue 7
 turquoise blue 7

female

male

Part no.
96.071.6253.1
96.071.6253.0

Part no.
96.072.6253.1
96.072.6253.0

96.071.6253.9
96.071.6253.6

96.072.6253.9
96.072.6253.6


female

male



modular, angled 90°

Color of coding	Poles
-----------------	-------

 turquoise blue 6

female





male

Part no.
96.063.6253.6

Part no.
96.064.6253.6

modular, angled 90°

Color of coding	Poles
-----------------	-------

 black 7
 light gray 7
 light blue 7
 turquoise blue 7

female

male

Part no.
96.073.6253.1
96.073.6253.0


Part no.
96.074.6253.1
96.074.6253.0

96.073.6253.9
96.073.6253.6

96.074.6253.9
96.074.6253.6

RST20I, CONNECTOR, 6/7 POLES

SCREW CONNECTION

TECHNICAL DATA		
	6/7 Poles (screw)	
	IEC	
Cable Ø	6 - 10 mm / 10 - 14 mm	
Voltage	250/400 V	600 V
Current	3 x 20 A + 4 x 5 A	3 x 20 A + 4 x 5 A (USA) 3 x 16 A + 4 x 2 A (Canada)
Wire Size	0.2 - 1.5mm²	20 - 14 AWG
Protection	IP69	Type 4X/6P



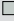


female



male








splitter connector, for cables Ø 6-10 mm

Color of coding	Poles	female	
		Part no.	
 turquoise blue	6	96.061.4253.6	
		female	male
Color of coding	Poles	Part no.	Part no.
 black	7	96.071.4253.1	96.072.4253.1
 light gray	7	96.071.4253.0	
 light blue	7	96.071.4253.9	
 turquoise blue	7	96.071.4253.6	96.072.4253.6

female




splitter connector, for cables Ø 10-14 mm

Color of coding	Poles	female	
		Part no.	
 turquoise blue	6	96.061.4353.6	
		female	
Color of coding	Poles	Part no.	
 black	7	96.071.4353.1	
 light gray	7	96.071.4353.0	
 light blue	7	96.071.4353.9	
 turquoise blue	7	96.071.4353.6	

RST25I3, CONNECTOR, 3 POLES

SCREW CONNECTION


TECHNICAL DATA		
	3 Poles (Screw)	
	IEC	
Cable Ø	6 - 10 mm / 10 - 14 mm / 13 mm - 18 mm	
Voltage	250/400 V	600 V
Current	25 A	25 A
Wire Size	0.75 - 6 mm ²	12 AWG Solid
Protection	IP69	Type 4X / 6P

female

male



straight, for cables Ø 6-10 mm

Color of coding	Poles
 concrete gray	3


female

male

Part no.
96.031.4054.3

Part no.
96.032.4054.3

straight, for cables Ø 10-14 mm

Color of coding	Poles
 concrete gray	3

female

male

Part no.
96.031.4154.3


Part no.
96.032.4154.3

female

male



straight, for cables Ø 13-18 mm

Color of coding	Poles
 concrete gray	3

female

male

Part no.
96.031.4554.3


Part no.
96.032.4554.3

female

male



angled 90°, for cables Ø 6-10 mm

Color of coding	Poles
 concrete gray	3


female

male

Part no.
96.033.4054.3

Part no.
96.034.4054.3

angled 90°, for cables Ø 10-14 mm

Color of coding	Poles
 concrete gray	3

female

male

Part no.
96.033.4154.3

Part no.
96.034.4154.3


RST25I3, CONNECTOR, 3 POLES

SCREW CONNECTION

female



splitter connector, for cables Ø 6-10 mm


Color of coding	Poles
 concrete gray	3

female

Part no.
96.031.4254.3

RST25I3, DEVICE CONNECTOR, M20, 3 POLES

SCREW CONNECTION

TECHNICAL DATA		
	3 Poles (Screw)	
	IEC	
Thread Size	M20 / M25	
Voltage	250/400 V	600 V
Current	25 A	25 A
Wire Size	0.75 - 6 mm ²	12 AWG Solid
Protection	IP69	Type 4X / 6P

female

male



modular, straight

Color of coding Poles

■ concrete gray 3

female

Part no.

96.031.6054.3

male

Part no.

96.032.6054.3

female

male



modular, angled 90°

Color of coding Poles

■ concrete gray 3

female

Part no.

96.033.6054.3

male

Part no.

96.034.6054.3

RST25I3, DEVICE CONNECTOR, M25, 3 POLES

SCREW CONNECTION

female

male



standard, straight

Color of coding Poles

■ concrete gray 3

female

Part no.

96.031.5054.3

male

Part no.

96.032.5054.3

female

male



modular, angled 90°

Color of coding Poles

■ concrete gray 3

female

Part no.

96.033.6254.3


male

Part no.

96.034.6254.3

RST25I5, CONNECTOR, 5 POLES

SCREW CONNECTION

TECHNICAL DATA		
	5 Poles (Screw)	
	IEC	
Cable Ø	6 - 10 mm / 10 - 14 mm / 13 mm - 18 mm	
Voltage	250/400 V	600 V
Current	25 A	25 A
Wire Size	0.75 - 6 mm ²	12 AWG Solid
Protection	IP69	Type 4X / 6P

female

male



straight, for cables Ø 6-10 mm

Color of coding	Poles
■ concrete gray	5

female

male

Part no.

Part no.

96.051.4054.3

96.052.4054.3

straight, for cables Ø 10-14 mm

Color of coding	Poles
■ concrete gray	5

female

male

Part no.

Part no.

96.051.4154.3

96.052.4154.3

female

male



straight, for cables Ø 13-18 mm

Color of coding	Poles
■ concrete gray	5

female

male

Part no.

Part no.

96.051.4554.3

96.052.4554.3

RST25I5, CONNECTOR, 5 POLES

SCREW CONNECTION

female



splitter connector, for cables Ø 6-10 mm

Color of coding	Poles
■ concrete gray	5

female

Part no.

99.584.0000.7

splitter connector, for cables Ø 10-14 mm

Color of coding	Poles
■ concrete gray	5


female

Part no.

99.585.0000.7

RST25I5, DEVICE CONNECTOR, M20, 5 POLES

SCREW CONNECTION


TECHNICAL DATA		
	5 Poles (Screw)	
	IEC	
Thread Size	M20 / M25	
Voltage	250/400 V	600 V
Current	25 A	25 A
Wire Size	0.75 - 6 mm ²	12 AWG Solid
Protection	IP69	Type 4X / 6P

female

male



modular, straight

Color of coding	Poles
 concrete gray	5

female

male

Part no.
96.051.6054.3


Part no.
96.052.6054.3

female

male



modular, angled 90°

Color of coding	Poles
 concrete gray	5

female

male

Part no.
96.053.6054.3

Part no.
96.054.6054.3

RST25I5, DEVICE CONNECTOR, M25, 5 POLES


SCREW CONNECTION

female

male



standard, straight

Color of coding	Poles
 concrete gray	5

female

male

Part no.
96.051.5054.3


Part no.
96.052.5054.3

female

male



modular, angled 90°

Color of coding	Poles
 concrete gray	5

female


male

Part no.
96.053.6254.3

Part no.
96.054.6254.3

RST16I, CABLE ASSEMBLY, 2-5 POLES




TECHNICAL DATA			
Rated current:	16 A	Combinations:	Male to female, male to free end, and female to free end
Degree of protection (IP):	Type 4X / 6P	Approvals:	
Lockable:	Self-locking (unlocking by hand)	Contact us for part numbers and additional options.	
Type of construction:	Cable screw gland		
Color of coding:	All codings possible		
Poles:	2 to 5		

Cable type can be selected according to application, by making use of most widely used North American cable types, such as SJOW, STOW, SOOW, or TC-ER.

RST20I, CABLE ASSEMBLY, 2-7 POLES



TECHNICAL DATA			
Rated current:	16 A or 20 A	Combinations:	Male to female, male to free end, and female to free end
Degree of protection (IP):	Type 4X / 6P	Approvals:	
Lockable:	self-locking (unlocking by tool)	Contact us for part numbers and additional options.	
Type of construction:	Cable screw gland		
Color of coding:	All codings possible		
Poles:	2 to 7		


Cable type can be selected according to application, by making use of most widely used North American cable types, such as SJOW, STOW, SOOW, or TC-ER.

SPECIALTY HARNESSES

Plan with confidence & deliver on-time. Wieland engineers work with you to develop a custom and specialized solution for your application.




RST20/25, ACCESSORIES




cover piece, tethered

Color	Poles	for Male	for Female
■ black	2/3	99.416.6205.2	99.414.6205.2
□ light gray	2/3	99.415.6205.2	99.413.6205.2



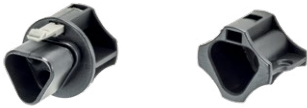
cover piece, tethered

Color	Poles	for Male	for Female
■ black	4/5	99.532.0000.7	99.530.0000.7
□ light gray	4/5	99.531.0000.7	99.529.0000.7




cover piece , thethered

Color	Poles	for Male	for Female
■ black	6/7	99.591.0000.7	99.589.0000.7




cover piece, untethered

Color	Poles	for Male	for Female
■ black	2/3	05.564.4453.1	Z5.564.4553.1
□ light gray	2/3	05.564.4453.0	Z5.564.4553.0



cover piece, untethered

Color	Poles	for Male	for Female
■ black	4/5	05.565.9953.1	Z5.565.9853.1
□ light gray	4/5	05.565.9953.0	Z5.565.9853.0



cover piece, untethered

Color	Poles	for Male	for Female
■ black	6/7	Z5.569.5353.1	Z5.569.5253.1

RST20/25, ACCESSORIES



manual disconnect tool, for connectors 2 to 5 poles

Color	Part no.
■ black	05.564.8653.1
■ leaves green	05.564.8653.7
■ concrete gray	05.564.8653.3

manual disconnect tool, for connectors 6 and 7 poles

Color	Part no.
■ black	06.562.8753.0



locking slide - safety Clip

Color	Part no.
■ black	05.583.2900.1
■ concrete gray	05.583.2900.3



sealing ring

Color	Ø Size	Part no.
■ black	6 - 10 mm	05.565.0400.0
■ black	8 - 12 mm	06.564.0383.0
■ black	10 - 14 mm	05.565.0500.0
■ black	13 - 18 mm	05.565.2600.0



mounting plate, for splitter connectors

Color	Part no.
■ black	01.006.1553.1
□ light gray	01.006.1553.0



sample case, RST20i2...i7

Part no.
99.431.0000.0

RST® POWER

The high-current connector for demanding loads.



FEATURES


- + 4 and 5 poles
- + 53 A rated current
- + Mechanical coding

APPLICATIONS

- + Outdoor and other areas that require a high degree of protection against the ingress of water & dust
- + Higher electrical loads
- + Ideal for applications requiring a lot of power such as server farms
- + Anywhere fast changes and modular designs are needed

RST50I, CONNECTOR, 4/5 POLES

SCREW CONNECTION

TECHNICAL DATA		
	4/5 Poles (screw)	
	IEC	
Cable Ø	15 - 25 mm / 20 - 32 mm	
Voltage	250/400 V	600 V
Current	50 A	53 A
Wire Size	4 - 16 mm ²	12 - 6 AWG
Protection	IP 66/67/69	Type 6P

female

male



straight, for cables Ø 15-25 mm

Color of coding	Poles
■ black	4

Color of coding	Poles
■ black	5

Color of coding	Poles
■ black	5

Color of coding	Poles
■ black	5

female

male

Part no.

Part no.

97.041.4053.1

97.042.4053.1

female

male

Part no.

Part no.

97.051.4053.1

97.052.4053.1

female

male



straight, for cables Ø 20-32 mm

Color of coding	Poles
■ black	4

Color of coding	Poles
■ black	5

Color of coding	Poles
■ black	5

Color of coding	Poles
■ black	5

female

male

Part no.

Part no.

97.041.4253.1

97.042.4253.1

female

male

Part no.

Part no.

97.051.4253.1

97.052.4253.1

RST50I, DEVICE CONNECTOR, M32, 4/5 POLES

SCREW CONNECTION

female

male



standard, straight, fixed in position

Color of coding	Poles
■ black	4

Color of coding	Poles
■ black	5

Color of coding	Poles
■ black	5

Color of coding	Poles
■ black	5

female

male

Part no.

Part no.

97.041.5553.1

97.042.5553.1

female

male

Part no.

Part no.

97.051.5553.1

97.052.5553.1

female

male



standard, straight, not fixed in position

Color of coding	Poles
■ black	4

Color of coding	Poles
■ black	5

Color of coding	Poles
■ black	5

Color of coding	Poles
■ black	5

female

male

Part no.

Part no.

97.041.5053.1

97.042.5053.1

female

male

Part no.

Part no.

97.051.5053.1

97.052.5053.1

RST50, ACCESSORIES



cover cap

Color	Part no.
■ black	Z5.567.5653.0



adapter ring, M40

Color	Part no.
■ black	05.568.1853.0



sample case, RST50i5

Part no.
99.628.0000.0

CABLE GLANDS + VENTED PLUGS

AFFORDABLE SEALING TECHNOLOGY FOR OUTDOOR APPLICATIONS

Cable glands and fittings provide strain relief for cables and high protection against dirt, dust, water and other liquids for electric and electronic systems, up to IP 68/ 4X. **Ventilation glands & plugs**, also known as Pressure Balance Elements (PBEs), balance the pressure difference between inside and outside of an enclosure. At the same time, these devices provide a high degree of protection of up to IP 67/ 4X. This prevents corrosion and water condensation inside the enclosure and **extends the lifetime of the entire system**.



CABLE GLANDS

Affordable strain relief and protection against water, dirt and dust.

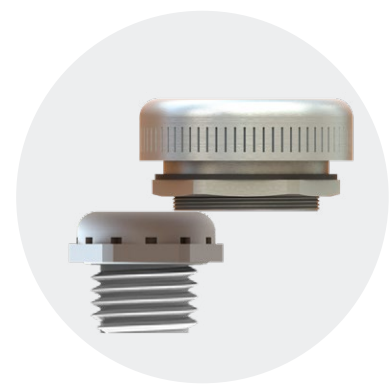
IP 68/4X



VENTED GLANDS

Cable gland and PBE (pressure balancing element) in one product!

IP 67/4X



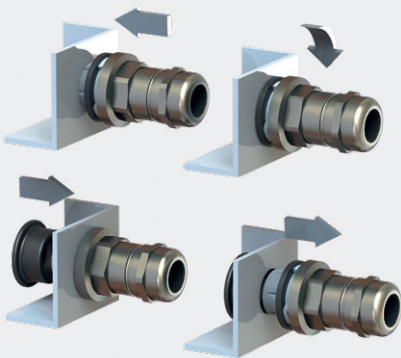
VENTED PLUGS (PBE)

Allows air to move, balancing pressure, while keeping water out.

IP 67/4X

EASY SNAP-IN!

Snap-in makes installation a breeze



BENEFITS

- ▶ High IP rating with gas permeability
- ▶ Strain Relief + enclosure protection
- ▶ Extended system lifetime
- ▶ Perfect fit with a range of sizes

FEATURES AT A GLANCE

- ▶ IP 67/68/4X
- ▶ Temperature range of -20 °C to +100 °C and UV protection
- ▶ Snap-in technology for device mounting
- ▶ Available in plastic (polyamide) and brass (nickel plated)
- ▶ Sizes in metric, PG, and NPT



wieland

NORTH AMERICAN HEADQUARTERS

Wieland Electric Inc.

2889 Brighton Road, Oakville

Ontario, Canada L6H 6C9

Tel +1 905 829 8414

Fax +1 905 829 8413

technical.support@wieland-electric.com

34.205.0166 04/21

Worldwide in over 70 Countries:

www.wielandinc.com